



For Safaris in Kenya, Tanzania & Rwanda

Travel

BROCHURE

*Our destinations are just
never a place, but a new
way of seeing things.*

E-mail: info@africasafaridiscovery.com | Website: www.africasafaridiscovery.com

20
18|19

Africa

Safari Discovery

Tours & Travel

For Safaris in Kenya, Tanzania & Rwanda



Content

Classic Safaris

Grand Kenya	4
Karibu Kenya	5
Twiga Safari	6
Kenya Horizons	7
Kenya Footsteps	8
Classic Kenya Safari	9
Kenya Highlights Safari	10
Explore Kenya Safari	11
Majestic Kenya Safari	12
Kenya Trails Safari	13
Discover Kenya Safari	14
Simba Safari	15
Kenya Plains Safari	16
Ndovu Trail	17
Kenya Frontiers Safari	18
Migration Safari	19
Maasai Safari	20
Safari Royal	21
Mara Serenade Experience	22
Mara Classic Experience	22
Mara Premium Experience	23

Mt. Kilimanjaro Safaris

Kilimanjaro Safari	23
Kilimanjaro Experience	24
Discover Amboseli	24
Treasures of East Africa	25
Splendours of Tanzania	26
Tanzania Migration Safari	27
East Africa Odysseys	28
Tanzania Photography Safari	29
Tanzania Highlights Classic	30
Rift Valley Explorer	31
Kenya Escape	32
Jambo Safari	33
Tsavol Taita Hills Express	34

Luxury Safaris

Best of East Africa	35
East Africa Highlights	36
Classic East Africa	38
Splendours of Kenya	39
Wings Over Kenya	40
Memories of Kenya	41
The Ultimate Tanzania Safari	42
Wings Over Kenya & Tanzania Safari	43
Kilimanjaro Climb – Marangu Route	44
Kilimanjaro Climb – Machame Route	45



Rwanda Safaris

Introductory	46-47
Classic Rwanda Safari	48
Two nights/ Three days Gorillas in the midst	49
Three nights/ Four days Gorillas in the midst	50



Afr7ca
Safari Discovery
Tours & Travel

For Safaris in Kenya, Tanzania & Rwanda

GRAND KENYA (CLASSIC)

Tour Code : ASD001

Classic Safaris

ITINERARY AT A GLANCE

Day	Location	Accommodation	Board	Activity
01	Nairobi	Nairobi Serena Hotel	BB	TRSF
02	Samburu	Samburu Simba Lodge	LDBB	P
03	Samburu	Samburu Simba Lodge	LDBB	E, P
04	Mount Kenya	Mountain Lodge	LDBB	GV
05	Lake Nakuru	Flamingo Hill Tented Camp	LDBB	P
06	Masai Mara	Mara Serena Lodge	LDBB	P
07	Masai Mara	Mara Serena Lodge	LDBB	E, A, P
08	Amboseli	Amboseli Serena Lodge	LDBB	P
09	Amboseli	Amboseli Serena Lodge	LDBB	E, P
10	Departure		TRSF	

L-Lunch, **D**-Dinner, **BB**-Bed and breakfast, **LDBB**-Lunch, dinner, bed and breakfast, **TRSF**-Transfer, **E**-Early morning game drive, **A**-Morning game drive, **P**-Afternoon game drive, **GV**-Game Viewing, **FLT**-Flight



DETAILED ITINERARY

DAY 01 – Arrival In Nairobi

Met upon arrival at Jomo Kenyatta International Airport by a Africa Safari Discovery representative. Assistance and transfer to your hotel. Rest of the day at leisure. Accommodation on bed & breakfast basis at The Nairobi Serena Hotel (BB)

DAY 02 – Nairobi/Samburu National Reserve

After breakfast, drive north via Nanyuki and Mt Kenya to the Samburu National Reserve. Rugged and remote, this wildlife reserve provides some the best and most colourful game viewing in the country arriving in time for lunch at the lodge. Afternoon game drive. Dinner and overnight at Samburu Simba Lodge (LDBB)

DAY 03 – Samburu National Reserve

Early morning game drive returning to the lodge for breakfast. Rest of the morning at leisure. Lunch. Afternoon game drive. Dinner and overnight at Samburu Simba Lodge (LDBB)

DAY 04 – Samburu National Reserve/Mount Kenya National Park

After breakfast drive to the Mount Kenya National Park arriving in time for lunch at The Serena Mountain Lodge. Rest of the day at leisure with game viewing from the lodge. Dinner and overnight at Serena Mountain Lodge

(LDBB)

DAY 05 – Mount Kenya National Park/Lake Nakuru National Park

After breakfast you will be collected for the day's drive, via the Nyahururu waterfalls to the floor of the Great Rift Valley, destination Lake Nakuru National Park arriving in time for lunch at the camp. Afternoon game drive. Dinner and overnight at Flamingo Hill Tented Camp (LDBB)

DAY 06 – Lake Nakuru National Park/Masai Mara National Reserve

After breakfast, drive to the Masai Mara National Reserve offering wonderful scenery and plenty of game. It is perhaps the only region left in Kenya where the visitor may see animals in the same super-abundance as existed a century ago, arriving in time for lunch at the lodge. Afternoon game drive. Dinner and overnight at Mara Serena Lodge (LDBB)

DAY 07 – Masai Mara National Reserve

{Early morning optional balloon ride with champagne-style breakfast.} Full day in Masai Mara with morning and afternoon game drives. All meals and overnight at Mara Serena Lodge (LDBB)

DAY 08 – Masai Mara National Reserve/Nairobi/Amboseli National Park

After breakfast drive to Nairobi arriving in time for lunch at The Carnivore Restaurant. After lunch drive to Amboseli National Park, lying below the most famous symbol of Africa, Mount Kilimanjaro. The 392 sq km Amboseli National Park lies due south of Nairobi, within clear sight of Mt Kilimanjaro, Africa's highest mountain at 5896 metres. The waters of the mountain feed the seasonal swamps and marshes on which the game and birds, which live in the park, rely. It is here that photographers will hope to shoot the classic picture of the elephant or giraffe standing against the dramatic backdrop of the snow capped mountain. Game drive enroute to your lodge. Dinner and overnight at Amboseli Serena Lodge (LDBB)

DAY 09 – Amboseli National Park

Early morning game drive returning to the lodge for breakfast. Rest of the morning at leisure. Lunch. Afternoon game drive. Dinner and overnight at Amboseli Serena Lodge (LDBB)

DAY 10 – Amboseli National Park/Nairobi/Departure

After breakfast, drive to Nairobi and drop off at your hotel or Jomo Kenyatta Airport for your departure flight back home. A Africa Safari Discovery representative will re-confirm your onward flight, and assist you at check-in.

End of our services.

KARIBU KENYA (CLASSIC)

Tour Code : ASD002

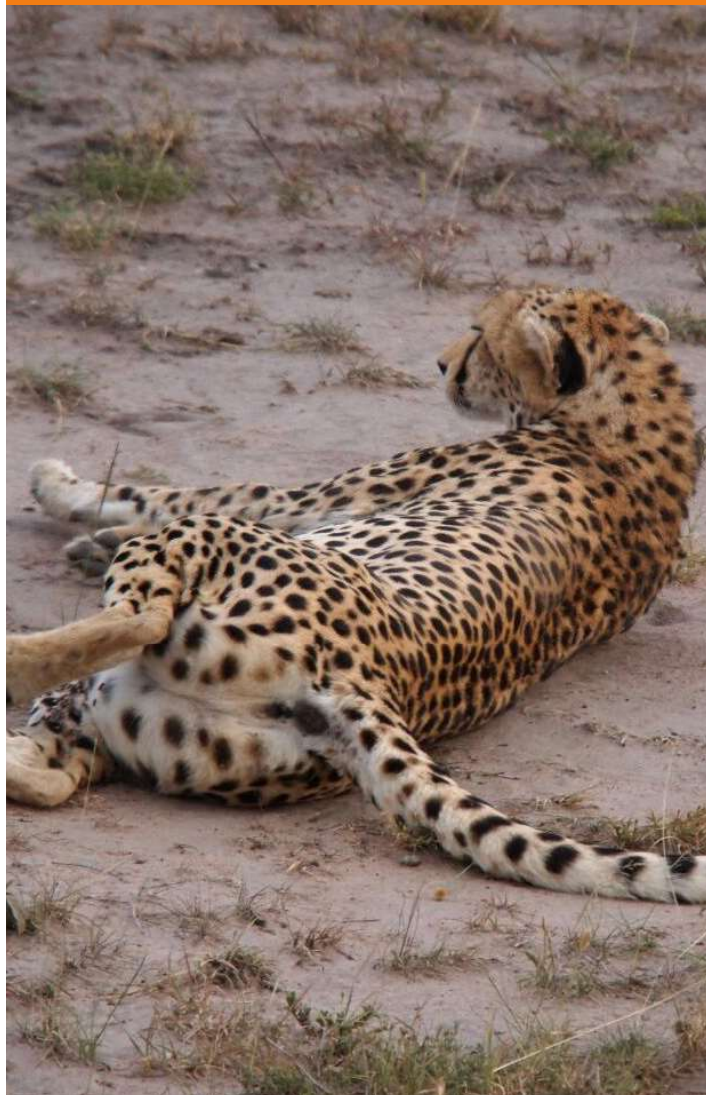
Classic Safaris

DETAILED ITINERARY

ITINERARY AT A GLANCE

Day	Location	Accommodation	Board	Activity
01	Nairobi	Panafric Hotel	BB	TRSF
02	Samburu	Samburu Sopa Lodge	LDBB	P
03	Samburu	Samburu Sopa Lodge	LDBB	E, P
04	Mount Kenya	The Ark Lodge	LDBB	GV
05	Nakuru/Naivasha	Naivasha Sopa Lodge	LDBB	P
06	Masai Mara	Mara Sopa Lodge	LDBB	P
07	Masai Mara	Mara Sopa Lodge	LDBB	E, A, P
08	Amboseli	Amboseli Sopa Lodge	LDBB	P
09	Amboseli	Amboseli Sopa Lodge	LDBB	E, P
10	Departure		TRSF	

L-Lunch, **D**-Dinner, **BB**-Bed and breakfast, **LDBB**-Lunch, dinner, bed and breakfast, **TRSF**-Transfer, **E**-Early morning game drive, **A**-Morning game drive, **P**-Afternoon game drive, **GV**-Game Viewing, **FLT**-Flight



Day 01 – Arrival In Nairobi

Met upon arrival at Jomo Kenyatta International Airport by a Africa Safari Discovery representative. Assistance and transfer to your hotel. Rest of the day at leisure. Accommodation on bed & breakfast basis at The Panafric Hotel (BB)

Day 02 – Nairobi/Samburu National Reserve

After breakfast, drive north via Nanyuki and Mt Kenya to the Samburu National Reserve. Rugged and remote, this wildlife reserve provides some the best and most colourful game viewing in the country arriving in time for lunch at the lodge. Afternoon game drive. Dinner and overnight at Samburu Sopa Lodge (LDBB)

Day 03 – Samburu National Reserve

Early morning game drive returning to the lodge for breakfast. Rest of the morning at leisure. Lunch. Afternoon game drive. Dinner and overnight at Samburu Sopa Lodge (LDBB)

Day 04 – Samburu National Reserve/Aberdare National Park

After breakfast drive to the Aberdares arriving in time for lunch at The Aberdare Country Club. After lunch transfer to the lodge situated inside the Aberdare National Park. Rest of the day at leisure with game viewing from the lodge. Dinner and overnight at The Ark Lodge (LDBB)

Day 05 – Aberdare National Park/Lake Nakuru National Park/Lake Naivasha

After breakfast you will be collected for the day's drive, via the Nyahururu waterfalls to the floor of the Great Rift Valley, destination Lake Nakuru National Park arriving in time for lunch at the lodge. After lunch proceed for a game drive and thereafter continue to Lake Naivasha arriving in the late afternoon for dinner and overnight at Lake Naivasha Sopa Lodge (LDBB)

Day 06 – Lake Naivasha/Masai Mara National Reserve

After breakfast, drive to the Masai Mara National Reserve offering wonderful scenery and plenty of game. It is perhaps the only region left in Kenya where the visitor may see animals in the same super-abundance as existed a century ago, arriving in time for lunch at the lodge. Afternoon game drive. Dinner and overnight at Mara Sopa Lodge (LDBB)

Day 07 – Masai Mara National Reserve

{Early morning optional balloon ride with champagne-style breakfast.} Full day in Masai Mara with morning and afternoon game drives. All meals and overnight at Mara Sopa Lodge (LDBB)

Day 08 – Masai Mara National Reserve/Nairobi/Amboseli National Park

After breakfast drive to Nairobi arriving in time for lunch at The Carnivore Restaurant. After lunch drive to Amboseli National Park, lying below the most famous symbol of Africa, Mount Kilimanjaro. The 392 sq km Amboseli National Park lies due south of Nairobi, within clear sight of Mt Kilimanjaro, Africa's highest mountain at 5896 metres. The waters of the mountain feed the seasonal swamps and marshes on which the game and birds, which live in the park, rely. It is here that photographers will hope to shoot the classic picture of the elephant or giraffe standing against the dramatic backdrop of the snow capped mountain. Game drive enroute to your lodge. Dinner and overnight at Amboseli Sopa Lodge (LDBB)

Day 09 – Amboseli National Park

Early morning game drive returning to the lodge for breakfast. Rest of the morning at leisure. Lunch. Afternoon game drive. Dinner and overnight at Amboseli Sopa Lodge (LDBB)

Day 10 – Amboseli National Park/Nairobi/Departure

After breakfast, drive to Nairobi and drop off at your hotel or Jomo Kenyatta Airport for your departure flight back home. A Africa Safari Discovery representative will re-confirm your onward flight, and assist you at check-in.

End of our services

TWIGA SAFARI (CLASSIC)

Tour Code : ASD003

Classic Safaris



ITINERARY AT A GLANCE

Day	Location	Accommodation	Board	Activity
01	Nairobi	The Stanley Hotel	BB	TRSF
02	Samburu	Sarova Shaba Lodge	LDBB	P
03	Samburu	Sarova Shaba Lodge	LDBB	E, P
04	Mount Kenya	The Ark Lodge	LDBB	CV
05	Lake Nakuru	Sarova Lion Hill Lodge	LDBB	P
06	Masai Mara	Sarova Mara Camp	LDBB	P
07	Masai Mara	Sarova Mara Camp	LDBB	E, A, P
08	Amboseli	Oltukai Lodge	LDBB	P
09	Amboseli	Oltukai Lodge	LDBB	E, P
10	Departure			TRSF

L-Lunch, **D**-Dinner, **BB**-Bed and breakfast, **LDBB**-Lunch, dinner, bed and breakfast, **TRSF**-Transfer, **E**-Early morning game drive, **A**-Morning game drive, **P**-Afternoon game drive, **GV**-Game Viewing, **FLT**-Flight

DETAILED ITINERARY

Day 01 – Arrival In Nairobi

Met upon arrival at Jomo Kenyatta International Airport by a Africa Safari Discovery representative. Assistance and transfer to your hotel. Rest of the day at leisure. Accommodation on bed & breakfast basis at The Stanley Hotel (BB)

Day 02 – Nairobi/Samburu National Reserve

After breakfast, drive north via Nanyuki and Mt Kenya to the Samburu National Reserve. Rugged and remote, this wildlife reserve provides some the best and most colourful game viewing in the country arriving in time for lunch at the lodge. Afternoon game drive. Dinner and overnight at Sarova Shaba Lodge (LDBB)

Day 03 – Samburu National Reserve

Early morning game drive returning to the lodge for breakfast. Rest of the morning at leisure. Lunch. Afternoon game drive. Dinner and overnight at Sarova Shaba Lodge (LDBB)

Day 04 – Samburu National Reserve/Aberdare National Park

After breakfast drive to the Aberdares arriving in time for lunch at The Aberdare Country Club. After lunch transfer to the lodge situated inside the Aberdare National Park. Rest of the day at leisure with game viewing from the lodge. Dinner and overnight at The Ark Lodge (LDBB)

Day 05 – Aberdare National Park/Lake Nakuru National Park

After breakfast you will be collected for the day's drive, via the Nyahururu waterfalls to the floor of the Great Rift Valley, destination Lake Nakuru National Park arriving in time for lunch at the lodge. Afternoon game drive. Dinner and overnight at Sarova Lion Hill Lodge (LDBB)

Day 06 – Lake Nakuru National Park/Masai Mara National Reserve

After breakfast, drive to the Masai Mara National Reserve offering wonderful scenery and plenty of game. It is per-

haps the only region left in Kenya where the visitor may see animals in the same super-abundance as existed a century ago, arriving in time for lunch at the lodge. Afternoon game drive. Dinner and overnight at Sarova Mara Camp (LDBB)

Day 07 – Masai Mara National Reserve

{Early morning optional balloon ride with champagne-style breakfast.} Full day in Masai Mara with morning and afternoon game drives. All meals and overnight at Sarova Mara Camp (LDBB)

Day 08 – Masai Mara National Reserve/Nairobi/Amboseli National Park

After breakfast drive to Nairobi arriving in time for lunch at The Carnivore Restaurant. After lunch drive to Amboseli National Park, lying below the most famous symbol of Africa, Mount Kilimanjaro. The 392 sq km Amboseli National Park lies due south of Nairobi, within clear sight of Mt Kilimanjaro, Africa's highest mountain at 5896 metres. The waters of the mountain feed the seasonal swamps and marshes on which the game and birds, which live in the park, rely. It is here that photographers will hope to shoot the classic picture of the elephant or giraffe standing against the dramatic backdrop of the snow capped mountain. Game drive enroute to your lodge. Dinner and overnight at Oltukai Lodge (LDBB)

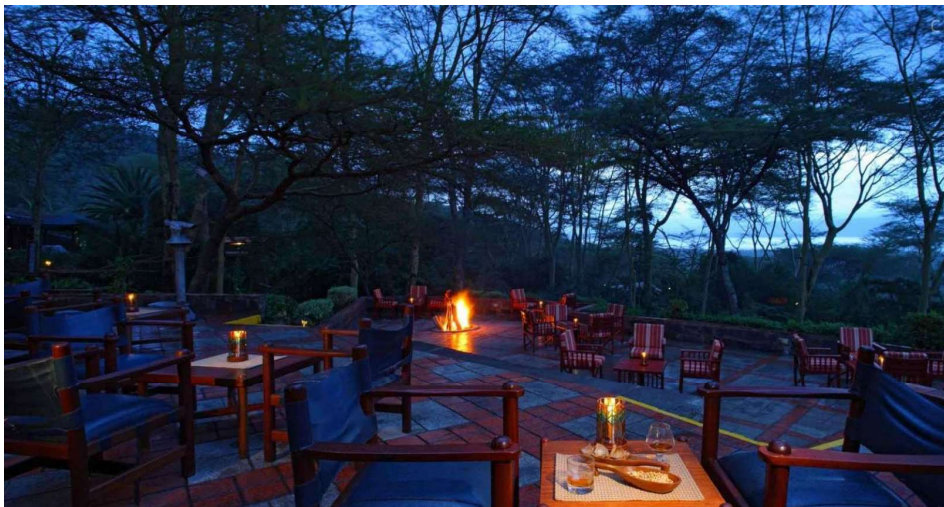
Day 09 – Amboseli National Park

Early morning game drive returning to the lodge for breakfast. Rest of the morning at leisure. Lunch. Afternoon game drive. Dinner and overnight at Oltukai Lodge (LDBB)

Day 10 – Amboseli National Park/Nairobi/Departure

After breakfast, drive to Nairobi and drop off at your hotel or Jomo Kenyatta Airport for your departure flight back home. A Africa Safari Discovery representative will re-confirm your onward flight, and assist you at check-in.

End of our services.



KENYA HORIZONS (CLASSIC)

Tour Code : ASD004



ITINERARY AT A GLANCE

Day	Location	Accommodation	Board	Activity
01	Nairobi	Nairobi Serena Hotel	BB	TRSF
02	Samburu	Samburu Simba Lodge	LDBB	P
03	Samburu	Samburu Simba Lodge	LDBB	E, P
04	Mount Kenya	Mountain Lodge	LDBB	CV
05	Lake Nakuru	Flamingo Hill Tented Camp	LDBB	P
06	Masai Mara	Mara Serena Lodge	LDBB	P
07	Masai Mara	Mara Serena Lodge	LDBB	E, A, P
08	Departure		TRSF	

L-Lunch, **D**-Dinner, **BB**-Bed and breakfast, **LDBB**-Lunch, dinner, bed and breakfast, **TRSF**-Transfer, **E**-Early morning game drive, **A**-Morning game drive, **P**-Afternoon game drive, **GV**-Game Viewing, **FLT**-Flight



Classic Safaris

DETAILED ITINERARY

Day 01 – Arrival In Nairobi

Met upon arrival at Jomo Kenyatta International Airport by a Africa Safari Discovery representative. Assistance and transfer to your hotel. Rest of the day at leisure. Accommodation on bed & breakfast basis at The Nairobi Serena Hotel (BB)

Day 02 – Nairobi/Samburu National Reserve

After breakfast, drive north via Nanyuki and Mt Kenya to the Samburu National Reserve. Rugged and remote, this wildlife reserve provides some of the best and most colourful game viewing in the country arriving in time for lunch at the lodge. Afternoon game drive. Dinner and overnight at Samburu Simba Lodge (LDBB)

Day 03 – Samburu National Reserve

Early morning game drive returning to the lodge for breakfast. Rest of the morning at leisure. Lunch. Afternoon game drive. Dinner and overnight at Samburu Simba Lodge (LDBB)

Day 04 – Samburu National Reserve/Mount Kenya National Park

After breakfast drive to the Mount Kenya National Park arriving in time for lunch at The Serena Mountain Lodge. Rest of the day at leisure with game viewing from the lodge. Dinner and overnight at Serena Mountain Lodge (LDBB)

Day 05 – Mount Kenya National Park/Lake Nakuru National Park

After breakfast you will be collected for the day's drive, via the Nyahururu waterfalls to the floor of the Great Rift Valley, destination Lake Nakuru National Park arriving in time for lunch at the camp. Afternoon game drive. Dinner and overnight at Flamingo Hill Tented Camp (LDBB)

Day 06 – Lake Nakuru National Park/Masai Mara National Reserve

After breakfast, drive to the Masai Mara National Reserve offering wonderful scenery and plenty of game. It is perhaps the only region left in Kenya where the visitor may see animals in the same super-abundance as existed a century ago, arriving in time for lunch at the lodge. Afternoon game drive. Dinner and overnight at Mara Serena Lodge (LDBB)

Day 07 – Masai Mara National Reserve

{Early morning optional balloon ride with champagne-style breakfast.} Full day in Masai Mara with morning and afternoon game drives. All meals and overnight at Mara Serena Lodge (LDBB)

Day 08 – Masai Mara National Reserve/Nairobi/Departure

After breakfast drive to Nairobi arriving in time for lunch at The Carnivore Restaurant. After lunch drop off at your hotel or Jomo Kenyatta Airport for your departure flight back home. A Africa Safari Discovery representative will re-confirm your onward flight, and assist you at check-in.

End of our services.

KENYA FOOTSTEPS (CLASSIC)
Tour Code : ASD005

Classic Safaris



ITINERARY AT A GLANCE

Day	Location	Accommodation	Board	Activity
01	Nairobi	Panafric Hotel	BB	TRSF
02	Samburu	Samburu Sopa Lodge	LDBB	P
03	Samburu	Samburu Sopa Lodge	LDBB	E, P
04	Mount Kenya	The Ark Lodge	LDBB	GV
05	Nakuru/Naivasha	Naivasha Sopa Lodge	LDBB	P
06	Masai Mara	Mara Sopa Lodge	LDBB	P
07	Masai Mara	Mara Sopa Lodge	LDBB	E, A, P
08	Departure		TRSF	

L-Lunch, **D**-Dinner, **BB**-Bed and breakfast, **LDBB**-Lunch, dinner, bed and breakfast, **TRSF**-Transfer, **E**-Early morning game drive, **A**-Morning game drive, **P**-Afternoon game drive, **GV**-Game Viewing, **FLT**-Flight

DETAILED ITINERARY

Day 01 – Arrival In Nairobi

Met upon arrival at Jomo Kenyatta International Airport by a Africa Safari Discovery representative. Assistance and transfer to your hotel. Rest of the day at leisure. Accommodation on bed & breakfast basis at The Panafric Hotel (BB)

Day 02 – Nairobi/Samburu National Reserve

After breakfast, drive north via Nanyuki and Mt Kenya to the Samburu National Reserve. Rugged and remote, this wildlife reserve provides some the best and most colourful game viewing in the country arriving in time for lunch at the lodge. Afternoon game drive. Dinner and overnight at Samburu Sopa Lodge (LDBB)

Day 03 – Samburu National Reserve

Early morning game drive returning to the lodge for breakfast. Rest of the morning at leisure. Lunch. Afternoon game drive. Dinner and overnight at Samburu Sopa Lodge (LDBB)

Day 04 – Samburu National Reserve/Aberdare National Park

After breakfast drive to the Aberdares arriving in time for lunch at The Aberdare Country Club. After lunch transfer to the lodge situated inside the Aberdare National Park. Rest of the day at leisure with game viewing from the lodge. Dinner and overnight at The Ark Lodge (LDBB)

Day 05 – Aberdare National Park/Lake Nakuru National Park/Lake Naivasha

After breakfast you will be collected for the day's drive, via the Nyahururu waterfalls to the floor of the Great Rift Valley, destination Lake Nakuru National Park arriving in time for lunch at the lodge. After lunch proceed for a game drive and thereafter continue to Lake Naivasha arriving in the late afternoon for dinner and overnight at Lake Naivasha Sopa Lodge (LDBB)

Day 06 – Lake Naivasha/Masai Mara National Reserve

After breakfast, drive to the Masai Mara National Reserve offering wonderful scenery and plenty of game. It is per-

haps the only region left in Kenya where the visitor may see animals in the same super-abundance as existed a century ago, arriving in time for lunch at the lodge. Afternoon game drive. Dinner and overnight at Mara Sopa Lodge (LDBB)

Day 07 – Masai Mara National Reserve

{Early morning optional balloon ride with champagne-style breakfast.} Full day in Masai Mara with morning and afternoon game drives. All meals and overnight at Mara Sopa Lodge (LDBB)

Day 08 – Masai Mara National Reserve/Nairobi/Departure

After breakfast drive to Nairobi arriving in time for lunch at The Carnivore Restaurant. After lunch drop off at your hotel or Jomo Kenyatta Airport for your departure flight back home. A Africa Safari Discovery representative will re-confirm your onward flight, and assist you at check-in.

End of our services.



CLASSIC KENYA SAFARI (CASSIC)

Tour Code : ASD006

Classic Safaris



ITINERARY AT A GLANCE

Day	Location	Accommodation	Board	Activity
01	Nairobi	The Stanley Hotel	BB	TRSF
02	Samburu	Sarova Shaba Lodge	LDBB	P
03	Samburu	Sarova Shaba Lodge	LDBB	E, P
04	Mount Kenya	The Ark Lodge	LDBB	CV
05	Lake Nakuru	Sarova Lion Hill Lodge	LDBB	P
06	Masai Mara	Sarova Mara Camp	LDBB	P
07	Masai Mara	Sarova Mara Camp	LDBB	E, A, P
08	Departure		TRSF	

L-Lunch, **D**-Dinner, **BB**-Bed and breakfast, **LDBB**-Lunch, dinner, bed and breakfast, **TRSF**-Transfer, **E**-Early morning game drive, **A**-Morning game drive, **P**-Afternoon game drive, **GV**-Game Viewing, **FLT**-Flight



DETAILED ITINERARY

Day 01 – Arrival In Nairobi

Met upon arrival at Jomo Kenyatta International Airport by a Africa Safari Discovery representative. Assistance and transfer to your hotel. Rest of the day at leisure. Accommodation on bed & breakfast basis at The Stanley Hotel (BB)

Day 02 – Nairobi/Samburu National Reserve

After breakfast, drive north via Nanyuki and Mt Kenya to the Samburu National Reserve. Rugged and remote, this wildlife reserve provides some of the best and most colourful game viewing in the country arriving in time for lunch at the lodge. Afternoon game drive. Dinner and overnight at Sarova Shaba Lodge (LDBB)

Day 03 – Samburu National Reserve

Early morning game drive returning to the lodge for breakfast. Rest of the morning at leisure. Lunch. Afternoon game drive. Dinner and overnight at Sarova Shaba Lodge (LDBB)

Day 04 – Samburu National Reserve/Aberdare National Park

After breakfast drive to the Aberdares arriving in time for lunch at The Aberdare Country Club. After lunch transfer to the lodge situated inside the Aberdare National Park. Rest of the day at leisure with game viewing from the lodge. Dinner and overnight at The Ark Lodge (LDBB)

Day 05 – Aberdare National Park/Lake Nakuru National Park

After breakfast you will be collected for the day's drive, via the Nyahururu waterfalls to the floor of the Great Rift Valley, destination Lake Nakuru National Park arriving in time for lunch at the lodge. Afternoon game drive. Dinner and overnight at Sarova Lion Hill Lodge (LDBB)

Day 06 – Lake Nakuru National Park/Masai Mara National Reserve

After breakfast, drive to the Masai Mara National Reserve offering wonderful scenery and plenty of game. It is perhaps the only region left in Kenya where the visitor may see animals in the same super-abundance as existed a century ago, arriving in time for lunch at the lodge. Afternoon game drive. Dinner and overnight at Sarova Mara Camp (LDBB)

Day 07 – Masai Mara National Reserve

{Early morning optional balloon ride with champagne-style breakfast.} Full day in Masai Mara with morning and afternoon game drives. All meals and overnight at Sarova Mara Camp (LDBB)

Day 08 – Masai Mara National Reserve/Nairobi/Departure

After breakfast drive to Nairobi arriving in time for lunch at The Carnivore Restaurant. After lunch drop off at your hotel or Jomo Kenyatta Airport for your departure flight back home. A Africa Safari Discovery representative will re-confirm your onward flight, and assist you at check-in.

End of our services.



KENYA HIGHLIGHTS SAFARI (CLASSIC)

Tour Code : ASD007

Classic Safaris



ITINERARY AT A GLANCE

Day	Location	Accommodation	Board	Activity
01	Nairobi	Nairobi Serena Hotel	BB	TRSF
02	Mount Kenya	Mountain Lodge	LDBB	CV
03	Lake Nakuru	Flamingo Hill Tented Camp	LDBB	P
04	Masai Mara	Mara Serena Lodge	LDBB	P
05	Masai Mara	Mara Serena Lodge	LDBB	E,A,P
06	Amboseli	Amboseli Serena Lodge	LDBB	P
07	Amboseli	Amboseli Serena Lodge	LDBB	E, P
08	Departure		TRSF	



L-Lunch, **D**-Dinner, **BB**-Bed and breakfast, **LDBB**-Lunch, dinner, bed and breakfast, **TRSF**-Transfer, **E**-Early morning game drive, **A**-Morning game drive, **P**-Afternoon game drive, **GV**-Game Viewing, **FLT**-Flight

DETAILED ITINERARY

Day 01 – Arrival in Nairobi

Met upon arrival at Jomo Kenyatta International Airport by a Africa Safari Discovery representative. Assistance and transfer to your hotel. Rest of the day at leisure. Accommodation on bed & breakfast basis at The Nairobi Serena Hotel (BB)

Day 02 – Nairobi/Mount Kenya National Park

After breakfast drive to the Mount Kenya National Park arriving in time for lunch at The Serena Mountain Lodge. Rest of the day at leisure with game viewing from the lodge. Dinner and overnight at Serena Mountain Lodge (LDBB)

Day 03 – Mount Kenya National Park/Lake Nakuru National Park

After breakfast you will be collected for the day's drive, via the Nyahururu waterfalls to the floor of the Great Rift Valley, destination Lake Nakuru National Park arriving in time for lunch at the camp. Afternoon game drive. Dinner and overnight at Flamingo Hill Tented Camp (LDBB)

Day 04 – Lake Nakuru National Park/Masai Mara National Reserve

After breakfast, drive to the Masai Mara National Reserve offering wonderful scenery and plenty of game. It is perhaps the only region left in Kenya where the visitor may see animals in the same super-abundance as existed a century ago, arriving in time for lunch at the lodge. Afternoon game drive. Dinner and overnight at Mara Serena Lodge (LDBB)

Day 05 – Masai Mara National Reserve

{Early morning optional balloon ride with champagne-style breakfast.} Full day in Masai Mara with morning and afternoon game drives. All meals and overnight at Mara Serena Lodge (LDBB)

Day 06 – Masai Mara National Reserve/Nairobi/Amboseli National Park

After breakfast drive to Nairobi arriving in time for lunch at The Carnivore Restaurant. After lunch drive to Amboseli National Park, lying below the most famous symbol of Africa, Mount Kilimanjaro. The 392 sq km Amboseli National Park lies due south of Nairobi, within clear sight of Mt Kilimanjaro, Africa's highest moun-

tain at 5896 metres. The waters of the mountain feed the seasonal swamps and marshes on which the game and birds, which live in the park, rely. It is here that photographers will hope to shoot the classic picture of the elephant or giraffe standing against the dramatic backdrop of the snow capped mountain. Game drive enroute to your lodge. Dinner and overnight at Amboseli Serena Lodge (LDBB)

Day 07 – Amboseli National Park

Early morning game drive returning to the lodge for breakfast. Rest of the morning at leisure. Lunch. Afternoon game drive. Dinner and overnight at Amboseli Serena Lodge (LDBB)

Day 08 – Amboseli National Park/Nairobi/Departure

After breakfast, drive to Nairobi and drop off at your hotel or Jomo Kenyatta Airport for your departure flight back home. A Africa Safari Discovery representative will re-confirm your onward flight, and assist you at check-in.

End of our services.



EXPLORE KENYA SAFARI (CLASSIC)

Tour Code : ASD008

ITINERARY AT A GLANCE

Day	Location	Accommodation	Board	Activity
01	Nairobi	Panafric Hotel	BB	TRSF
02	Mount Kenya	The Ark Lodge	LDBB	CV
03	Nakuru/Naivasha	Naivasha Sopa Lodge	LDBB	P
04	Masai Mara	Mara Sopa Lodge	LDBB	P
05	Masai Mara	Mara Sopa Lodge	LDBB	E,A,P
06	Amboseli	Amboseli Sopa Lodge	LDBB	P
07	Amboseli	Amboseli Sopa Lodge	LDBB	E, P
08	Departure		TRSF	

L-Lunch, **D**-Dinner, **BB**-Bed and breakfast, **LDBB**-Lunch, dinner, bed and breakfast, **TRSF**-Transfer, **E**-Early morning game drive, **A**-Morning game drive, **P**-Afternoon game drive, **GV**-Game Viewing, **FLT**-Flight

DETAILED ITINERARY

Day 01 – Arrival In Nairobi

Met upon arrival at Jomo Kenyatta International Airport by a Africa Safari Discovery representative. Assistance and transfer to your hotel. Rest of the day at leisure. Accommodation on bed & breakfast basis at The Panafric Hotel (BB)

Day 02 – Nairobi/Aberdare National Park

After breakfast drive to the Aberdares arriving in time for lunch at The Aberdare Country Club. After lunch transfer to the lodge situated inside the Aberdare National Park. Rest of the day at leisure with game viewing from the lodge. Dinner and overnight at The Ark Lodge (LDBB)

Day 03 – Aberdare National Park/Lake Nakuru National Park/Lake Naivasha

After breakfast you will be collected for the day's drive, via the Nyahururu waterfalls to the floor of the Great Rift Valley, destination Lake Nakuru National Park arriving in time for lunch at the lodge. After lunch proceed for a game drive and thereafter continue to Lake Naivasha arriving in the late afternoon for dinner and overnight at Lake Naivasha Sopa Lodge (LDBB)

Day 04 – Lake Naivasha/Masai Mara National Reserve

After breakfast, drive to the Masai Mara National Reserve offering wonderful scenery and plenty of game. It is perhaps the only region left in Kenya where the visitor may see animals in the same super-abundance as existed a century ago, arriving in time for lunch at the lodge. Afternoon game drive. Dinner and overnight at Mara Sopa Lodge (LDBB)

Day 05 – Masai Mara National Reserve

{Early morning optional balloon ride with champagne-style breakfast.} Full day in Masai Mara with morning and afternoon game drives. All meals and overnight at Mara Sopa Lodge (LDBB)

Day 06 – Masai Mara National Reserve/ Nairobi/Amboseli National Park

After breakfast drive to Nairobi arriving in time for lunch at The Carnivore Restaurant. After lunch drive to Amboseli National Park, lying below the most famous symbol of Africa, Mount Kilimanjaro. The 392 sq km Amboseli National Park lies due south of Nairobi, within clear sight of Mt Kilimanjaro, Africa's highest mountain at 5896 metres. The waters of the mountain feed the seasonal swamps and marshes on which the game and birds, which live in the park, rely. It is here that photographers will hope to shoot the classic picture of the elephant or giraffe standing against the dramatic backdrop of the snow capped mountain. Game drive enroute to your lodge. Dinner and overnight at Amboseli Sopa Lodge (LDBB)

Day 07 – Amboseli National Park

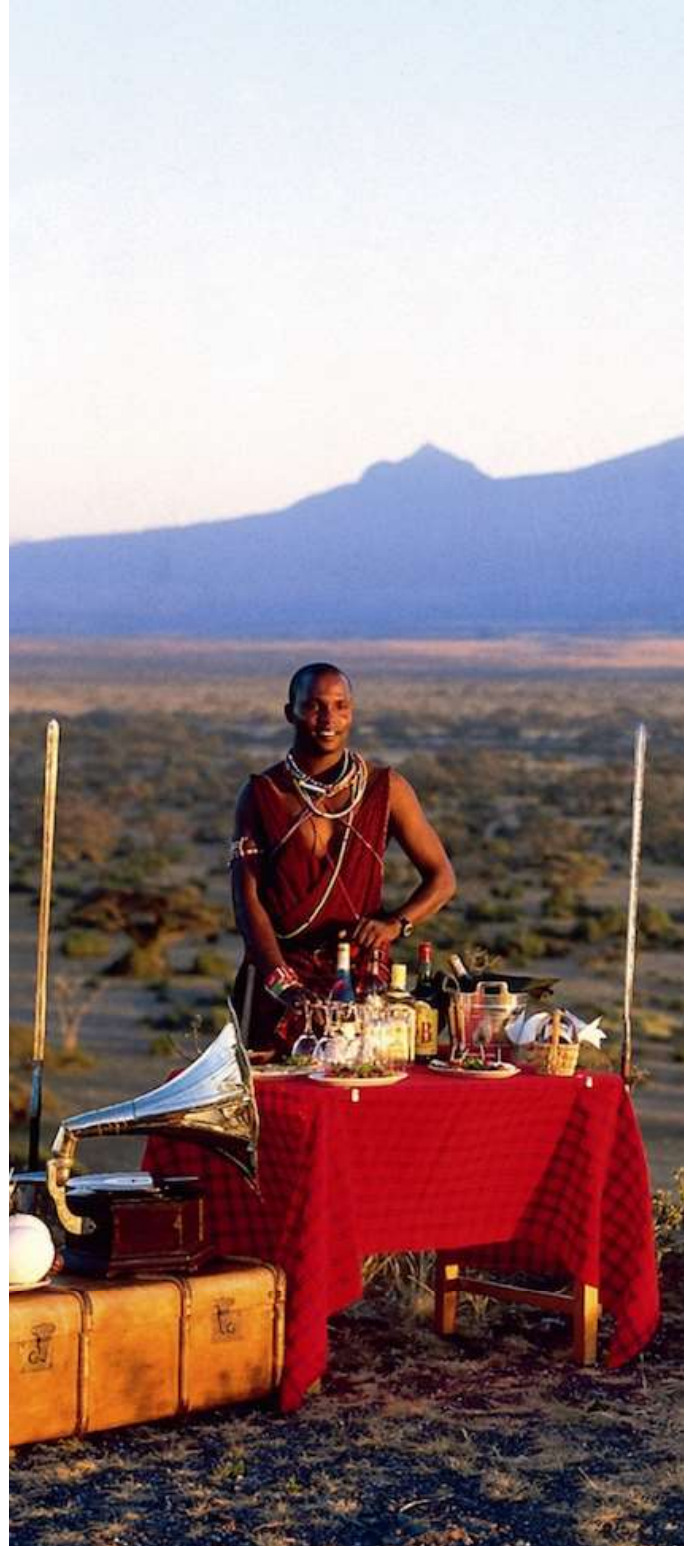
Early morning game drive returning to the lodge for breakfast. Rest of the morning at leisure. Lunch. Afternoon game drive. Dinner and overnight at Amboseli Sopa Lodge (LDBB)

Day 08 – Amboseli National Park/Nairobi/Departure

After breakfast, drive to Nairobi and drop off at your hotel or Jomo Kenyatta Airport for your departure flight back home. A Africa Safari Discovery representative will re-confirm your onward flight, and assist you at check-in.

End of our services.

Classic Safaris



MAJESTIC KENYA SAFARI (CLASSIC)

Tour Code : ASD009

Classic Safaris

ITINERARY AT A GLANCE

Day	Location	Accommodation	Board	Activity
01	Nairobi	The Stanley Hotel	BB	TRSF
02	Mount Kenya	The Ark Lodge	LDBB	GV
03	Lake Nakuru	Sarova Lion Hill Lodge	LDBB	P
04	Masai Mara	Sarova Mara Camp	LDBB	P
05	Masai Mara	Sarova Mara Camp	LDBB	E,A,P
06	Amboseli	Oltukai Lodge LDBB	LDBB	P
07	Amboseli	Oltukai Lodge LDBB	LDBB	E, P
08	Departure		TRSF	

L-Lunch, **D**-Dinner, **BB**-Bed and breakfast, **LDBB**-Lunch, dinner, bed and breakfast, **TRSF**-Transfer, **E**-Early morning game drive, **A**-Morning game drive, **P**-Afternoon game drive, **GV**-Game Viewing, **FLT**-Flight

DETAILED ITINERARY

Day 01 – Arrival In Nairobi

Met upon arrival at Jomo Kenyatta International Airport by a Africa Safari Discovery representative. Assistance and transfer to your hotel. Rest of the day at leisure. Accommodation on bed & breakfast basis at The Stanley Hotel (BB)

Day 02 – Nairobi/Aberdare National Park

After breakfast drive to the Aberdares arriving in time for lunch at The Aberdare Country Club. After lunch transfer to the lodge situated inside the Aberdare National Park. Rest of the day at leisure with game viewing from the lodge. Dinner and overnight at The Ark Lodge (LDBB)

Day 03 – Aberdare National Park/Lake Nakuru National Park

After breakfast you will be collected for the day's drive, via the Nyahururu waterfalls to the floor of the Great Rift Valley, destination Lake Nakuru National Park arriving in time for lunch at the lodge. Afternoon game drive. Dinner and overnight at Sarova Lion Hill Lodge (LDBB)

Day 04 – Lake Nakuru National Park/Masai Mara National Reserve

After breakfast, drive to the Masai Mara National Reserve offering wonderful scenery and plenty of game. It is perhaps

the only region left in Kenya where the visitor may see animals in the same super-abundance as existed a century ago, arriving in time for lunch at the lodge. Afternoon game drive. Dinner and overnight at Sarova Mara Camp (LDBB)

Day 05 – Masai Mara National Reserve

{Early morning optional balloon ride with champagne-style breakfast.} Full day in Masai Mara with morning and afternoon game drives. All meals and overnight at Sarova Mara Camp (LDBB)

Day 06 – Masai Mara National Reserve/Nairobi/Amboseli National Park

After breakfast drive to Nairobi arriving in time for lunch at The Carnivore Restaurant. After lunch drive to Amboseli National Park, lying below the most famous symbol of Africa, Mount Kilimanjaro. The 392 sq km Amboseli National Park lies due south of Nairobi, within clear sight of Mt Kilimanjaro, Africa's highest mountain at 5896 metres. The waters of the mountain feed the seasonal swamps and marshes on which the game and birds, which live in the park, rely. It is here that photographers will hope to shoot the classic picture of the elephant or giraffe standing against the dramatic backdrop of the snow capped mountain. Game drive en-route to your lodge. Dinner and overnight at Oltukai Lodge (LDBB)

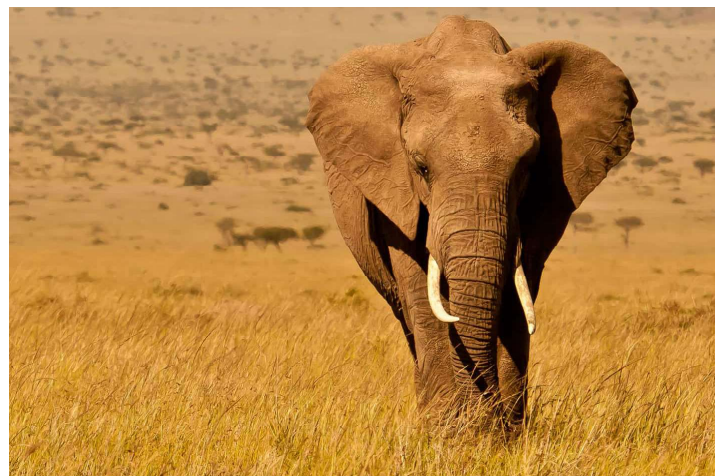
Day 07 – Amboseli National Park

Early morning game drive returning to the lodge for breakfast. Rest of the morning at leisure. Lunch. Afternoon game drive. Dinner and overnight at Oltukai Lodge (LDBB)

Day 08 – Amboseli National Park/Nairobi/Departure

After breakfast, drive to Nairobi and drop off at your hotel or Jomo Kenyatta Airport for your departure flight back home. A Africa Safari Discovery representative will re-confirm your onward flight, and assist you at check-in.

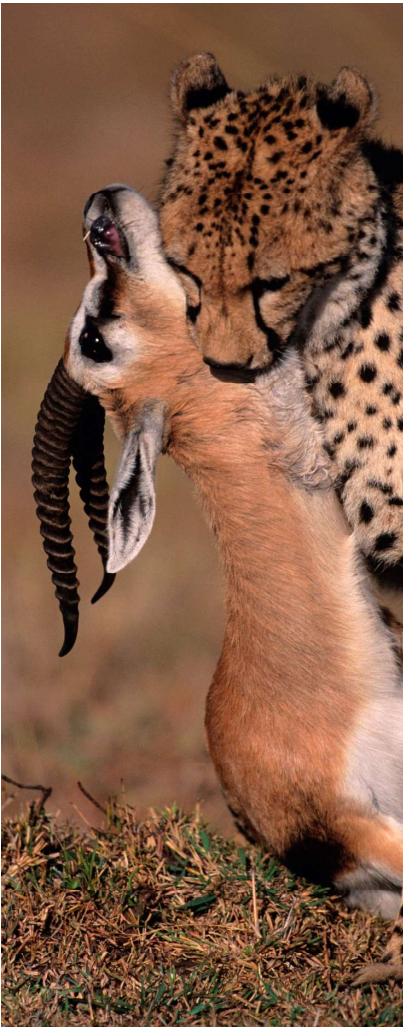
End of our services.



KENYA TRAILS SAFARI (CLASSIC)

Tour Code : ASD010

Classic Safaris



ITINERARY AT A GLANCE

Day	Location	Accommodation	Board	Activity
01	Nairobi	Nairobi Serena Hotel	BB	TRSF
02	Mount Kenya	Mountain Lodge	LDBB	CV
03	Lake Nakuru	Flamingo Hill Tented Camp	LDBB	P
04	Masai Mara	Mara Serena Lodge	LDBB	P
05	Masai Mara	Mara Serena Lodge	LDBB	E,A,P
06	Departure		TRSF	

L-Lunch,
D-Dinner,
BB-Bed and breakfast,
LDBB-Lunch, dinner, bed and breakfast,
TRSF-Transfer,
E-Early morning game drive,
A-Morning game drive,
P-Afternoon game drive,
GV-Game Viewing,
FLT-Flight

DETAILED ITINERARY

Day 01 – Arrival In Nairobi

Met upon arrival at Jomo Kenyatta International Airport by a Africa Safari Discovery representative. Assistance and transfer to your hotel. Rest of the day at leisure. Accommodation on bed & breakfast basis at The Nairobi Serena Hotel (BB)

Day 02 – Nairobi/Mount Kenya National Park

After breakfast drive to the Mount Kenya National Park arriving in time for lunch at The Serena Mountain Lodge. Rest of the day at leisure with game viewing from the lodge. Dinner and overnight at Serena Mountain Lodge (LDBB)

Day 03 – Mount Kenya National Park/ Lake Nakuru National Park

After breakfast you will be collected

for the day's drive, via the Nyahururu waterfalls to the floor of the Great Rift Valley, destination Lake Nakuru National Park arriving in time for lunch at the camp. Afternoon game drive. Dinner and overnight at Flamingo Hill Tented Camp (LDBB)

Day 04 – Lake Nakuru National Park/ Masai Mara National Reserve

After breakfast, drive to the Masai Mara National Reserve offering wonderful scenery and plenty of game. It is perhaps the only region left in Kenya where the visitor may see animals in the same super-abundance as existed a century ago, arriving in time for lunch at the lodge. Afternoon game drive. Dinner and overnight at Mara Serena Lodge (LDBB)

Day 05 – Masai Mara National Reserve

{Early morning optional balloon ride with champagne-style breakfast.}

Full day in Masai Mara with morning and afternoon game drives. All meals and overnight at Mara Serena Lodge (LDBB)

Day 06 – Masai Mara National Reserve/Nairobi/Departure

After breakfast drive to Nairobi arriving in time for lunch at The Carnivore Restaurant. After lunch drop off at your hotel or Jomo Kenyatta Airport for your departure flight back home. A Africa Safari Discovery representative will re-confirm your onward flight, and assist you at check-in.

End of our services.

DISCOVER KENYA SAFARI (CLASSIC)

Tour Code : ASD011

Classic Safaris

ITINERARY AT A GLANCE

Day	Location	Accommodation	Board	Activity
01	Nairobi	Panafric Hotel	BB	TRSF
02	Mount Kenya	The Ark Lodge	LDBB	GV
03	Nakuru/Naivasha	Naivasha Sopa Lodge	LDBB	P
04	Masai Mara	Mara Sopa Lodge	LDBB	P
05	Masai Mara	Mara Sopa Lodge	LDBB	E,A,P
06	Departure		TRSF	

L-Lunch,
D-Dinner,
BB-Bed and breakfast,
LDBB-Lunch, dinner, bed and breakfast,
TRSF-Transfer,
E-Early morning game drive,
A-Morning game drive,
P-Afternoon game drive,
GV-Game Viewing,
FLT-Flight

DETAILED ITINERARY

Day 01 – Arrival In Nairobi

Met upon arrival at Jomo Kenyatta International Airport by a Africa Safari Discovery representative. Assistance and transfer to your hotel. Rest of the day at leisure. Accommodation on bed & breakfast basis at The Panafric Hotel (BB)

Day 02 – Nairobi/Aberdare National Park

After breakfast drive to the Aberdares arriving in time for lunch at The Aberdare Country Club. After lunch transfer to the lodge situated inside the Aberdare National Park. Rest of the day at leisure with game viewing from the lodge. Dinner and overnight at The Ark Lodge (LDBB)

Day 03 – Aberdare National Park/Lake Nakuru National Park/Lake Naivasha

After breakfast you will be collected for the day's drive, via the Nyahururu waterfalls to the floor of the Great Rift Valley, destination Lake Nakuru National Park arriving in time for lunch at the lodge. After lunch proceed for a game drive and thereafter continue to Lake Naivasha arriving in the late afternoon for dinner and overnight at Lake Naivasha Sopa Lodge (LDBB)

Day 04 – Lake Naivasha/Masai Mara National Reserve

After breakfast, drive to the Masai Mara National Reserve offering wonderful scenery and plenty of game. It is perhaps the only region left in Kenya where the visitor may see animals in the same super-abundance as existed a century ago, arriving in time for lunch at the lodge. Afternoon game drive. Dinner and overnight at Mara Sopa Lodge (LDBB)

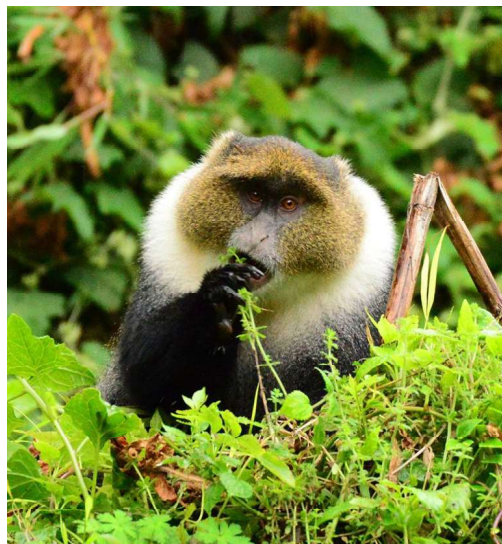
Day 05 – Masai Mara National Reserve

{Early morning optional balloon ride with champagne-style breakfast.}

Full day in Masai Mara with morning and afternoon game drives. All meals and overnight at Mara Sopa Lodge (LDBB)

Day 06 – Masai Mara National Reserve/Nairobi/Departure

After breakfast drive to Nairobi arriving in time for lunch at The Carnivore Restaurant. After lunch drop off at your hotel or Jomo Kenyatta Airport for your departure flight back home. A Africa Safari Discovery representative will re-confirm your onward flight, and assist you at check-in.



SIMBA SAFARI (CLASSIC)

Tour Code : ASD012

Classic Safaris



ITINERARY AT A GLANCE

Day	Location	Accommodation	Board	Activity
01	Nairobi	The Stanley Hotel	BB	TRSF
02	Mount Kenya	The Ark Lodge	LDBB	GV
03	Lake Nakuru	Sarova Lion Hill Lodge	LDBB	P
04	Masai Mara	Sarova Mara Camp	LDBB	P
05	Masai Mara	Sarova Mara Camp	LDBB	E,A,P
06	Departure			TRSF

L-Lunch, **D**-Dinner, **BB**-Bed and breakfast, **LDBB**-Lunch, dinner, bed and breakfast, **TRSF**-Transfer, **E**-Early morning game drive, **A**-Morning game drive, **P**-Afternoon game drive, **GV**-Game Viewing, **FLT**-Flight



DETAILED ITINERARY

Day 01 – Arrival In Nairobi

Met upon arrival at Jomo Kenyatta International Airport by a Africa Safari Discovery representative. Assistance and transfer to your hotel. Rest of the day at leisure. Accommodation on bed & breakfast basis at The Stanley Hotel (BB)

Day 02 – Nairobi/Aberdare National Park

After breakfast drive to the Aberdares arriving in time for lunch at The Aberdare Country Club. After lunch transfer to the lodge situated inside the Aberdare National Park. Rest of the day at leisure with game viewing from the lodge. Dinner and overnight at The Ark Lodge (LDBB)

Day 03 – Aberdare National Park/Lake Nakuru National Park

After breakfast you will be collected for the day's drive, via the Nyahururu waterfalls to the floor of the Great Rift Valley, destination Lake Nakuru National Park arriving in time for lunch at the lodge. Afternoon game drive. Dinner and overnight at Sarova Lion Hill Lodge (LDBB)

Day 04 – Lake Nakuru National Park/Masai Mara National Reserve

After breakfast, drive to the Masai Mara National Reserve offering wonderful scenery and plenty of game. It is perhaps the only region left in Kenya where the visitor may see animals in the same super-abundance as existed a century ago, arriving in time for lunch at the lodge. Afternoon game drive. Dinner and overnight at Sarova Mara Camp (LDBB)

Day 05 – Masai Mara National Reserve

{Early morning optional balloon ride with champagne-style breakfast.}

Full day in Masai Mara with morning and after-



noon game drives. All meals and overnight at Sarova Mara Camp (LDBB)

Day 06 – Masai Mara National Reserve/Nairobi/Departure

After breakfast drive to Nairobi arriving in time for lunch at The Carnivore Restaurant. After lunch drop off at your hotel or Jomo Kenyatta Airport for your departure flight back home. A Africa Safari Discovery representative will re-confirm your onward flight, and assist you at check-in.

End of our services.

KENYA PLAINS & SAFARI (CLASSIC)

Tour Code : ASD013

Classic Safaris

ITINERARY AT A GLANCE

Day	Location	Accommodation	Board	Activity
01	Nairobi	Nairobi Serena Hotel	BB	TRSF
02	Lake Nakuru	Flamingo Hill Tented Camp	LDBB	P
03	Masai Mara	Mara Serena Lodge	LDBB	P
04	Masai Mara	Mara Serena Lodge	LDBB	E, A, P
05	Amboseli	Amboseli Serena Lodge	LDBB	P
06	Amboseli	Amboseli Serena Lodge	LDBB	E, P
07	Departure			TRSF

L-Lunch, **D**-Dinner, **BB**-Bed and breakfast, **LDBB**-Lunch, dinner, bed and breakfast, **TRSF**-Transfer, **E**-Early morning game drive, **A**-Morning game drive, **P**-Afternoon game drive, **GV**-Game Viewing, **FLT**-Flight



DETAILED ITINERARY

Day 01 – Arrival In Nairobi

Met upon arrival at Jomo Kenyatta International Airport by a Africa Safari Discovery representative. Assistance and transfer to your hotel. Rest of the day at leisure. Accommodation on bed & breakfast basis at The Nairobi Serena Hotel (BB)

Day 02 – Nairobi/Lake Nakuru National Park

After breakfast drive to Lake Nakuru National Park arriving in time for lunch at the camp. Afternoon game drive. Dinner and overnight at Flamingo Hill Tented Camp (LDBB)

Day 03 – Lake Nakuru National Park/Masai Mara National Reserve

After breakfast, drive to the Masai Mara National Reserve offering wonderful scenery and plenty of game. It is perhaps the only region left in Kenya where the visitor may see animals in the same super-abundance as existed a century ago, arriving in time for lunch at the lodge. Afternoon game drive. Dinner and overnight at Mara Serena Lodge (LDBB)

Day 04 – Masai Mara National Reserve

{Early morning optional balloon ride with champagne-style breakfast.} Full day in Masai Mara with morning and afternoon game drives. All meals and overnight at Mara Serena Lodge (LDBB)

Day 05 – Masai Mara National Reserve/Nairobi/Amboseli National Park

After breakfast drive to Nairobi arriving in time for lunch at The Carnivore Restaurant. After lunch drive to Amboseli National Park, lying below the most famous symbol of Africa, Mount Kilimanjaro. The 392 sq km Amboseli National Park lies due south of Nairobi, within clear sight of Mt Kilimanjaro, Africa's highest mountain at 5896 metres. The waters of the mountain feed the seasonal swamps and marshes on which the game and birds, which live in the park, rely. It is here that photographers will hope to shoot the classic picture of the elephant or giraffe standing against the dramatic backdrop of the snow capped mountain. Game drive enroute to your lodge. Dinner and overnight at Amboseli Serena Lodge (LDBB)

Day 06 – Amboseli National Park

Early morning game drive returning to the lodge for breakfast. Rest of the morning at leisure. Lunch. Afternoon game drive. Dinner and overnight at Amboseli Serena Lodge (LDBB)

Day 07 – Amboseli National Park/Nairobi/Departure

After breakfast, drive to Nairobi and drop off at your hotel or Jomo Kenyatta Airport for your departure flight back home. A Africa Safari Discovery representative will re-confirm your onward flight, and assist you at check-in.

End of our services.



NDOVU TRAIL (CLASSIC)

Tour Code : ASD014



DETAILED ITINERARY

Day 01 – Arrival In Nairobi

Met upon arrival at Jomo Kenyatta International Airport by a Africa Safari Discovery representative. Assistance and transfer to your hotel. Rest of the day at leisure. Accommodation on bed & breakfast basis at The Panafric Hotel (BB)

Day 02 – Nairobi/Lake Nakuru National Park/Lake Naivasha

After breakfast drive to Lake Naivasha for lunch at your lodge. After lunch proceed for a game drive to Lake Nakuru National Park. Thereafter drive back to Lake Naivasha. Dinner and overnight at Lake Naivasha Sopa Lodge (LDBB)

Day 03 – Lake Naivasha/Masai Mara National Reserve

After breakfast, drive to the Masai Mara National Reserve offering wonderful scenery and plenty of game. It is perhaps the only region left in Kenya where the visitor may see animals in the same super-abundance as existed a century ago, arriving in time for lunch at the lodge. Afternoon game drive. Dinner and overnight at Mara Sopa Lodge (LDBB)

Day 04 – Masai Mara National Reserve

{Early morning optional balloon ride with champagne-style breakfast.} Full day in Masai Mara with morning and afternoon game drives. All meals and overnight at Mara Sopa Lodge (LDBB)

Day 05 – Masai Mara National Reserve/Nairobi/Amboseli National Park

After breakfast drive to Nairobi arriving in time for lunch at The Carnivore Restaurant. After lunch drive to Amboseli National Park, lying below the most famous symbol of Africa, Mount Kilimanjaro. The 392 sq km Amboseli National Park lies due south of Nairobi, within clear sight of Mt Kilimanjaro, Africa's highest mountain at 5896 metres. The waters of the mountain feed the seasonal swamps and marshes on which the game and birds, which live in the park, rely. It is here that photographers will hope to shoot the classic picture of the elephant or giraffe standing against the dramatic backdrop of the snow capped mountain. Game drive enroute to your lodge. Dinner and overnight at Amboseli Sopa Lodge (LDBB)

Day 06 – Amboseli National Park

Early morning game drive returning to the lodge for breakfast. Rest of the morning at leisure. Lunch. Afternoon game drive. Dinner and overnight at Amboseli Sopa Lodge (LDBB)

Day 07 – Amboseli National Park/Nairobi/Departure

After breakfast, drive to Nairobi and drop off at your hotel or Jomo Kenyatta Airport for your departure flight back home. A Africa Safari Discovery representative will re-confirm your onward flight, and assist you at check-in.

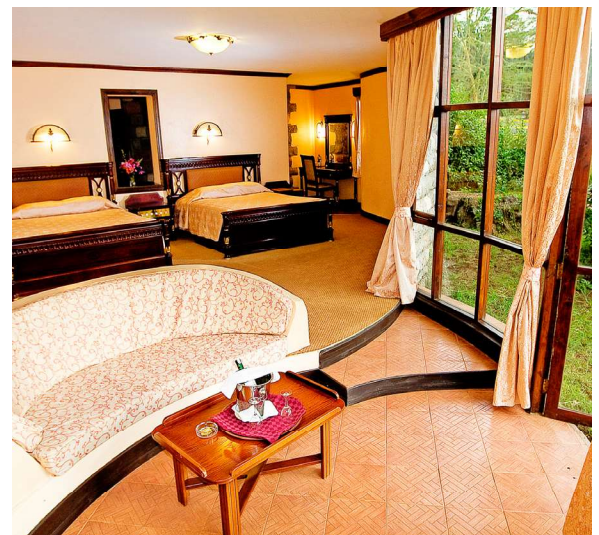
End of our services.

Classic Safaris

ITINERARY AT A GLANCE

Day	Location	Accommodation	Board	Activity
01	Nairobi	Nairobi Panafric Hotel	BB	TRSF
02	Nakuru/Naivasha	Naivasha Sopa Lodge	LDBB	GV
03	Masai Mara	Mara Sopa Lodge	LDBB	P
04	Masai Mara	Mara Sopa Lodge	LDBB	E,A,P
05	Amboseli	Amboseli Sopa Lodge	LDBB	P
06	Amboseli	Amboseli Sopa Lodge	LDBB	E, P
07	Departure		TRSF	

L-Lunch, **D**-Dinner, **BB**-Bed and breakfast, **LDBB**-Lunch, dinner, bed and breakfast, **TRSF**-Transfer, **E**-Early morning game drive, **A**-Morning game drive, **P**-Afternoon game drive, **GV**-Game Viewing, **FLT**-Flight



KENYA FRONTIERS SAFARI (CLASSIC)

Tour Code : ASD015

Classic Safaris



ITINERARY AT A GLANCE

Day	Location	Accommodation	Board	Activity
01	Nairobi	The Stanley Hotel	BB	TRSF
02	Lake Nakuru	Sarova Lion Hill Lodge	LDBB	P
03	Masai Mara	Sarova Mara Camp	LDBB	P
04	Masai Mara	Sarova Mara Camp	LDBB	E, A, P
05	Amboseli	Oltukai Lodge	LDBB	P
06	Amboseli	Oltukai Lodge	LDBB	E, P
07	Departure		TRSF	

L-Lunch, **D**-Dinner, **BB**-Bed and breakfast, **LDBB**-Lunch, dinner, bed and breakfast, **TRSF**-Transfer, **E**-Early morning game drive, **A**-Morning game drive, **P**-Afternoon game drive, **GV**-Game Viewing, **FLT**-Flight

DETAILED ITINERARY

Day 01 – Arrival In Nairobi

Met upon arrival at Jomo Kenyatta International Airport by aAfrica Safari Discovery representative. Assistance and transfer to your hotel. Rest of the day at leisure. Accommodation on bed & breakfast basis at The Stanley Hotel (BB)

Day 02 – Nairobi/Lake Nakuru National Park

After breakfast drive to Lake Nakuru National Park arriving in time for lunch at the lodge. Afternoon game drive. Dinner and overnight at Sarova Lion Hill Lodge (LDBB)

Day 03 – Lake Nakuru National Park/Masai Mara National Reserve

After breakfast, drive to the Masai Mara National Reserve offering wonderful scenery and plenty of game. It is perhaps the only region left in Kenya where the visitor may see animals in the same super-abundance as existed a century ago, arriving in time for lunch at the lodge. Afternoon game drive. Dinner and overnight at Sarova Mara Camp (LDBB)

Day 04– Masai Mara National Reserve

{Early morning optional balloon ride with champagne-style breakfast.} Full day in Masai Mara with morning and afternoon game drives. All meals and overnight at Sarova Mara Camp (LDBB)

Day 05 – Masai Mara National Reserve/Nairobi/Amboseli National Park

After breakfast drive to Nairobi arriving in time for lunch at The Carnivore Restaurant. After lunch drive to Amboseli National Park, lying below the most famous symbol of Africa, Mount Kilimanjaro. The 392 sq km Amboseli National Park lies due south of Nairobi, within clear sight

of Mt Kilimanjaro, Africa's highest mountain at 5896 metres. The waters of the mountain feed the seasonal swamps and marshes on which the game and birds, which live in the park, rely. It is here that photographers will hope to shoot the classic picture of the elephant or giraffe standing against the dramatic backdrop of the snow capped mountain. Game drive enroute to your lodge. Dinner and overnight at Oltukai Lodge (LDBB)

Day 06 – Amboseli National Park

Early morning game drive returning to the lodge for breakfast. Rest of the morning at leisure. Lunch. Afternoon game drive. Dinner and overnight at Oltukai Lodge (LDBB)

Day 07 – Amboseli National Park/Nairobi/Departure

After breakfast, drive to Nairobi and drop off at your hotel or Jomo Kenyatta Airport for your departure flight back home. A Africa Safari Discovery representative will re-confirm your onward flight, and assist you at check-in.

End of our services.



MIGRATION SAFARI (CLASSIC)

Tour Code : ASD016

Classic Safaris

ITINERARY AT A GLANCE

Day	Location	Accommodation	Board	Activity
01	Nairobi	Nairobi Serena Hotel	BB	TRSF
02	Lake Nakuru	Flamingo Hill Tented Camp	LDBB	P
03	Masai Mara	Mara Serena Lodge	LDBB	P
04	Masai Mara	Mara Serena Lodge	LDBB	E,A,P
05	Departure		TRSF	

L-Lunch,
D-Dinner,
BB-Bed and breakfast,
LDBB-Lunch, dinner, bed and breakfast,
TRSF-Transfer,
E-Early morning game drive,
A-Morning game drive,
P-Afternoon game drive,
GV-Game Viewing,
FLT-Flight



DETAILED ITINERARY

Day 01 – Arrival In Nairobi

Met upon arrival at Jomo Kenyatta International Airport by a Africa Safari Discovery representative. Assistance and transfer to your hotel. Rest of the day at leisure. Accommodation on bed & breakfast basis at The Nairobi Serena Hotel (BB)

Day 02 – Nairobi/Lake Nakuru National Park

After breakfast drive to Lake Nakuru National Park arriving in time for lunch at the camp. Afternoon game drive. Dinner and overnight at Flamingo Hill Tented Camp (LDBB)

Day 03 – Lake Nakuru National Park/Masai Mara National Reserve

After breakfast, drive to the Masai Mara National Reserve offering wonderful scenery and plenty of game. It is perhaps the only region left in Kenya where the visitor may see animals in the same super-abundance as existed a century ago, arriving in time for lunch at the lodge. Afternoon game drive. Dinner and overnight at Mara Serena Lodge (LDBB)

Day 04 – Masai Mara National Reserve

{Early morning optional balloon ride with champagne-style breakfast.} Full day in Masai Mara with morning and afternoon game drives. All meals and overnight at Mara Serena Lodge (LDBB)

Day 05 – Masai Mara National Reserve/Nairobi/Departure

After breakfast drive to Nairobi arriving in time for lunch at The Carnivore Restaurant. After lunch drop off at your hotel or Jomo Kenyatta Airport for your departure flight back home. A Africa Safari Discovery representative will re-confirm your onward flight, and assist you at check-in.

End of our services.



MAASAI SAFARI (CLASSIC)
Tour Code : ASD017

Classic Safaris

ITINERARY AT A GLANCE			
Day	Location	Accommodation	Board Activity
01	Nairobi	Panafric Hotel	BB TRSF
02	Nakuru/Naivasha	Naivasha Sopa Lodge	LOBB P
03	Masai Mara	Mara Sopa Lodge	LOBB P
04	Masai Mara	Mara Sopa Lodge	LOBB E, A, P
05	Departure		TRSF

L-Lunch,
D-Dinner,
BB-Bed and breakfast,
LDBB-Lunch, dinner, bed and breakfast,
TRSF-Transfer,
E-Early morning game drive,
A-Morning game drive,
P-Afternoon game drive,
GV-Game Viewing,
FLT-Flight



DETAILED ITINERARY

Day 01 – Arrival In Nairobi

Met upon arrival at Jomo Kenyatta International Airport by a Africa Safari Discovery representative. Assistance and transfer to your hotel. Rest of the day at leisure. Accommodation on bed & breakfast basis at The Panafric Hotel (BB)

Day 02 – Nairobi/Lake Nakuru National Park/Lake Naivasha

After breakfast drive to Lake Naivasha for lunch at your lodge. After lunch proceed for a game drive to Lake Nakuru National Park. Thereafter drive back to Lake Naivasha. Dinner and overnight at Lake Naivasha Sopa Lodge (LDBB)

Day 03 – Lake Naivasha/Masai Mara National Reserve

After breakfast, drive to the Masai Mara National Reserve offering wonderful scenery and plenty of game. It is perhaps the only region left in Kenya where the visitor may see animals in the same super-abundance as existed a century ago, arriving in time for lunch at the lodge. Afternoon game drive. Dinner and overnight at Mara Sopa Lodge (LDBB)

Day 04 – Masai Mara National Reserve

{Early morning optional balloon ride with champagne-style breakfast.} Full day in Masai Mara with morning and afternoon game drives. All meals and overnight at Mara Sopa Lodge (LDBB)



Day 05 – Masai Mara National Reserve/Nairobi/Departure

After breakfast drive to Nairobi arriving in time for lunch at The Carnivore Restaurant. After lunch drop off at your hotel or Jomo Kenyatta Airport for your departure flight back home. A Africa Safari Discovery representative will re-confirm your onward flight, and assist you at check-in.

End of our services.



SAFARI ROYALE (CLASSIC)

Tour Code : ASD018

Classic Safaris



DETAILED ITINERARY

Day 01 – Arrival In Nairobi

Met upon arrival at Jomo Kenyatta International Airport by a Africa Safari Discovery representative. Assistance and transfer to your hotel. Rest of the day at leisure. Accommodation on bed & breakfast basis at The Stanley Hotel (BB)

Day 02 – Nairobi/Lake Nakuru National Park

After breakfast drive to Lake Nakuru National Park arriving in time for lunch at the lodge. Afternoon game drive. Dinner and overnight at Sarova Lion Hill Lodge (LDBB)

Day 03 – Lake Nakuru National Park/Masai Mara National Reserve

After breakfast, drive to the Masai Mara National Reserve offering wonderful scenery and plenty of game. It is perhaps the only region left in Kenya where the visitor may see animals in the same super-abundance as existed a century ago, arriving in time for lunch at the lodge. Afternoon game drive. Dinner and overnight at Sarova Mara Camp (LDBB)

Day 04 – Masai Mara National Reserve

{Early morning optional balloon ride with champagne-style breakfast}
Full day in Masai Mara with morning and afternoon game drives. All meals and overnight at Sarova Mara Camp (LDBB)

Day 05 – Masai Mara National Reserve/Nairobi/Departure

After breakfast drive to Nairobi arriving in time for lunch at The Carnivore Restaurant. After lunch drop off at your hotel or Jomo Kenyatta Airport for your departure flight back home. A Africa Safari Discovery representative will re-confirm your onward flight, and assist you at check-in.

End of our services.



ITINERARY AT A GLANCE

Day	Location	Accommodation	Board	Activity
01	Nairobi	The Stanley Hotel	BB	TRSF
02	Lake Nakuru	Sarova Lion Hill Lodge	LOBB	P
03	Masai Mara	Sarova Mara Camp	LOBB	P
04	Masai Mara	Sarova Mara Camp	LOBB	E,A,P
05	Departure		TRSF	

L-Lunch, **D**-Dinner, **BB**-Bed and breakfast, **LDBB**-Lunch, dinner, bed and breakfast, **TRSF**-Transfer, **E**-Early morning game drive, **A**-Morning game drive, **P**-Afternoon game drive, **GV**-Game Viewing, **FLT**-Flight

Classic Safaris

MARA SERENADE EXPERIENCE (CLASSIC)

Tour Code : ASD019

ITINERARY AT A GLANCE

Day	Location	Accommodation	Board	Activity
01	Masai Mara	Mara Serena Lodge	LDBB	P
02	Masai Mara	Mara Serena Lodge	LOBB	E, A, P
03	Departure			TRSF

L-Lunch, **D**-Dinner, **BB**-Bed and breakfast, **LDBB**-Lunch, dinner, bed and breakfast, **TRSF**-Transfer, **E**-Early morning game drive, **A**-Morning game drive, **P**-Afternoon game drive, **GV**-Game Viewing, **FLT**-Flight

DETAILED ITINERARY

Day 01 – Nairobi/Masai Mara National Reserve

After breakfast, drive to the Masai Mara National Reserve offering wonderful scenery and plenty of game. It is perhaps the only region left in Kenya where the visitor may see animals in the same super-abundance as existed a century ago, arriving in time for lunch at the lodge. Afternoon game drive. Dinner and overnight at Mara Serena Lodge (LDBB)

Day 02 – Masai Mara National Reserve

{Early morning optional balloon ride with champagne-style breakfast.} Full day in Masai Mara with morning and afternoon game drives. All meals and overnight at Mara Serena Lodge (LDBB)

Day 03 – Masai Mara National Reserve/Nairobi/Departure

After breakfast drive to Nairobi arriving in time for lunch at The Carnivore Restaurant. After lunch drop off at your hotel or Jomo Kenyatta Airport for your departure flight back home. A Africa Safari Discovery representative will re-confirm your onward flight, and assist you at check-in.

End of our services.



MARA CLASSIC EXPERIENCE (CLASSIC)

Tour Code : ASD020

ITINERARY AT A GLANCE

Day	Location	Accommodation	Board	Activity
01	Masai Mara	Mara Sopa Lodge	LDBB	P
02	Masai Mara	Mara Sopa Lodge	LOBB	E, A, P
03	Departure			TRSF

L-Lunch, **D**-Dinner, **BB**-Bed and breakfast, **LDBB**-Lunch, dinner, bed and breakfast, **TRSF**-Transfer, **E**-Early morning game drive, **A**-Morning game drive, **P**-Afternoon game drive, **GV**-Game Viewing, **FLT**-Flight

DETAILED ITINERARY

Day 01 – Nairobi/Masai Mara National Reserve

After breakfast, drive to the Masai Mara National Reserve offering wonderful scenery and plenty of game. It is perhaps the only region left in Kenya where the visitor may see animals in the same super-abundance as existed a century ago, arriving in time for lunch at the lodge. Afternoon game drive. Dinner and overnight at Mara Sopa Lodge (LDBB)

Day 02 – Masai Mara National Reserve

{Early morning optional balloon ride

with champagne-style breakfast.}

Full day in Masai Mara with morning and afternoon game drives. All meals and overnight at Mara Sopa Lodge (LDBB)

Day 03 – Masai Mara National Reserve/Nairobi/Departure

After breakfast drive to Nairobi arriving in time for lunch at The Carnivore Restaurant. After lunch drop off at your hotel or Jomo Kenyatta Airport for your departure flight back home. An Africa Safari Discovery representative will re-confirm your onward flight, and assist you at check-in.

End of our services.

MARA PREMIUM EXPERIENCE (CLASSIC)

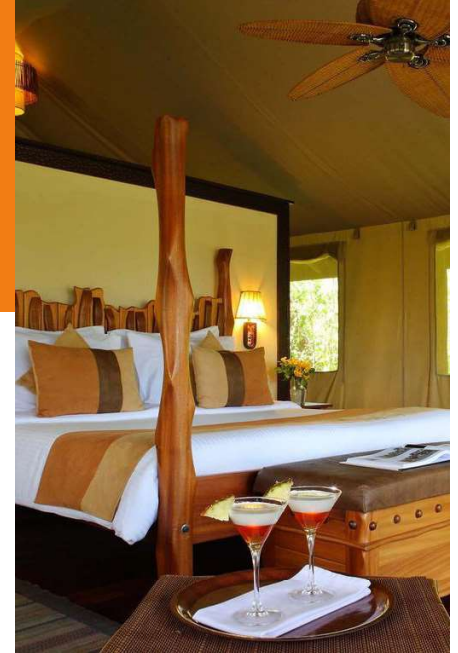
Tour Code : ASD021

Classic Safaris

ITINERARY AT A GLANCE

Day	Location	Accommodation	Board	Activity
01	Masai Mara	Sarova Mara Camp	LDBB	P
02	Masai Mara	Sarova Mara Camp	LDBB	E, A, P
03	Departure		TRSF	

L-Lunch, **D**-Dinner, **BB**-Bed and breakfast, **LDBB**-Lunch, dinner, bed and breakfast, **TRSF**-Transfer, **E**-Early morning game drive, **A**-Morning game drive, **P**-Afternoon game drive, **GV**-Game Viewing, **FLT**-Flight



DETAILED ITINERARY

Day 01 – Nairobi/Masai Mara National Reserve

After breakfast, drive to the Masai Mara National Reserve offering wonderful scenery and plenty of game. It is perhaps the only region left in Kenya where the visitor may see animals in the same super-abundance as existed a century ago, arriving in time for lunch at the lodge. Afternoon

game drive. Dinner and overnight at Sarova Mara Camp (LDBB)

Day 02 – Masai Mara National Reserve

{Early morning optional balloon ride with champagne-style breakfast.} Full day in Masai Mara with morning and afternoon game drives. All meals and overnight at Sarova Mara Camp (LDBB)

Day 03 – Masai Mara National Reserve/Nairobi/Departure

After breakfast drive to Nairobi arriving in time for lunch at The Carnivore Restaurant. After lunch drop off at your hotel or Jomo Kenyatta Airport for your departure flight back home. A Africa Safari Discovery representative will re-confirm your onward flight, and assist you at check-in.

End of our services.

KILIMANJARO SAFARI (CLASSIC)

Tour Code : ASD022



ITINERARY AT A GLANCE

Day	Location	Accommodation	Board	Activity
01	Amboseli	Amboseli Serena Lodge	LDBB	P
02	Amboseli	Amboseli Serena Lodge	LDBB	E, P
03	Departure		TRSF	

L-Lunch, **D**-Dinner, **BB**-Bed and breakfast, **LDBB**-Lunch, dinner, bed and breakfast, **TRSF**-Transfer, **E**-Early morning game drive, **A**-Morning game drive, **P**-Afternoon game drive, **GV**-Game Viewing, **FLT**-Flight

DETAILED ITINERARY

Day 01 – Nairobi/Amboseli National Park

Lunch at The Carnivore Restaurant. After lunch drive to Amboseli National Park, lying below the most famous symbol of Africa, Mount Kilimanjaro. The 392 sq km Amboseli National Park lies due south of Nairobi, within clear sight of Mt Kilimanjaro, Africa's highest mountain at 5896 metres. The waters of the mountain feed the seasonal swamps and marshes on which the game and birds, which live in the park, rely. It is here that photographers will hope to shoot the classic picture of the elephant or giraffe standing against the dramatic backdrop of the snow capped mountain. Game drive enroute to your lodge. Dinner and overnight at Amboseli Serena Lodge

(LDBB)

Day 02–Amboseli National Park

Early morning game drive returning to the lodge for breakfast. Rest of the morning at leisure. Lunch. Afternoon game drive. Dinner and overnight at Amboseli Serena Lodge (LDBB)

Day 03 – Amboseli National Park/Nairobi/Departure

After breakfast, drive to Nairobi and drop off at your hotel or Jomo Kenyatta Airport for your departure flight back home. A Africa Safari Discovery representative will re-confirm your onward flight, and assist you at check-in.

End of our services.

Mt Kilimanjaro Safaris

KILIMANJARO EXPERIENCE (CLASSIC)

Tour Code : ASD023

ITINERARY AT A GLANCE

Day	Location	Accommodation	Board	Activity
01	Amboseli	Amboseli Sopa Lodge	LDBB	P
02	Amboseli	Amboseli Sopa Lodge	LOBB	E, A, P
03	Departure			TRSF

L-Lunch, **D**-Dinner, **BB**-Bed and breakfast, **LDBB**-Lunch, dinner, bed and breakfast, **TRSF**-Transfer, **E**-Early morning game drive, **A**-Morning game drive, **P**-Afternoon game drive, **GV**-Game Viewing, **FLT**-Flight

DETAILED ITINERARY

Day 01 – Nairobi/Amboseli National Park

Lunch at The Carnivore Restaurant. After lunch drive to Amboseli National Park, lying below the most famous symbol of Africa, Mount Kilimanjaro. The 392 sq km Amboseli National Park lies due south of Nairobi, within clear sight of Mt Kilimanjaro, Africa's highest mountain at 5896 metres. The waters of the mountain feed the seasonal swamps and marshes on which the game and birds, which live in the park, rely. It is here that photographers will hope to shoot the classic picture of the elephant or giraffe standing against the dramatic backdrop of the snow capped mountain. Game drive enroute to your lodge. Dinner and overnight at Amboseli Sopa Lodge (LDBB)

Day 02 – Amboseli National Park

Early morning game drive returning to the lodge for breakfast. Rest of the morning at leisure. Lunch. Afternoon game drive. Dinner and overnight at Amboseli Sopa Lodge (LDBB)

Day 03 – Amboseli National Park/Nairobi/Departure

After breakfast, drive to Nairobi and drop off at your hotel or Jomo Kenyatta Airport for your departure flight back home. A Africa Safari Discovery representative will re-confirm your onward flight, and assist you at check-in.

End of our services.



DISCOVER AMBOSELI (CLASSIC)

Tour Code : ASD024

ITINERARY AT A GLANCE

Day	Location	Accommodation	Board	Activity
01	Amboseli	Oltukai Lodge	LDBB	P
02	Amboseli	Oltukai Lodge	LOBB	E, P
03	Departure			TRSF

L-Lunch, **D**-Dinner, **BB**-Bed and breakfast, **LDBB**-Lunch, dinner, bed and breakfast, **TRSF**-Transfer, **E**-Early morning game drive, **A**-Morning game drive, **P**-Afternoon game drive, **GV**-Game Viewing, **FLT**-Flight

DETAILED ITINERARY

Day 01 – Nairobi/Amboseli National Park

Lunch at The Carnivore Restaurant. After lunch drive to Amboseli National Park, lying below the most famous symbol of Africa, Mount Kilimanjaro. The 392 sq km Amboseli National Park lies due south of Nairobi, within clear sight of Mt Kilimanjaro, Africa's highest mountain at 5896 metres. The waters of the mountain feed the seasonal swamps and marshes on which the game and birds, which live in the park, rely. It is here that photographers will hope to shoot the classic picture of the elephant or giraffe standing against the dramatic backdrop of the snow capped mountain. Game drive enroute to your lodge. Dinner and

overnight at Oltukai Lodge (LDBB)

Day 02 – Amboseli National Park

Early morning game drive returning to the lodge for breakfast. Rest of the morning at leisure. Lunch. Afternoon game drive. Dinner and overnight at Oltukai Lodge (LDBB)

Day 03 – Amboseli National Park/Nairobi/Departure

After breakfast, drive to Nairobi and drop off at your hotel or Jomo Kenyatta Airport for your departure flight back home. A Africa Safari Discovery representative will re-confirm your onward flight, and assist you at check-in.

End of our services.

TREASURES OF EAST AFRICA (CLASSIC)

Tour Code : ASD025

Mt Kilimanjaro Safaris

ITINERARY AT A GLANCE

Day	Location	Accommodation	Board	Activity
01	Nairobi	Nairobi Serena Hotel	BB	TRSF
02	Amboseli	Amboseli Serena Lodge	LDBB	P
03	Amboseli	Amboseli Serena Lodge	LDBB	E, P
04	Ngorongoro	Ngorongoro Serena Lodge	LDBB	LE
05	Ngorongoro	Ngorongoro Serena Lodge	LDBB	CT, LE
06	Serengeti	Serengeti Serena Lodge	LDBB	P
07	Serengeti	Serengeti Serena Lodge	LDBB	E, A, P
08	Manyara	Lake Manyara Serena Lodge	LDBB	P
09	Departure		L	TRSF

L-Lunch, **D**-Dinner, **BB**-Bed and breakfast, **LDBB**-Lunch, dinner, bed and breakfast, **TRSF**-Transfer, **E**-Early morning game drive, **A**-Morning game drive, **P**-Afternoon game drive, **GV**-Game Viewing, **FLT**-Flight, **CT**-Crater Tour, **LE**-Leisure



DETAILED ITINERARY

Day 01 – Arrival In Nairobi

Met upon arrival at Jomo Kenyatta International Airport by a Africa Safari Discovery representative. Assistance and transfer to your hotel. Rest of the day at leisure. Accommodation on bed & breakfast basis at The Nairobi Serena Hotel (BB)

Day 02 – Nairobi/Amboseli National Park

After breakfast drive to Amboseli National Park, lying below the most famous symbol of Africa, Mount Kilimanjaro. The 392 sq km Amboseli National Park lies due south of Nairobi, within clear sight of Mt Kilimanjaro, Africa's highest mountain at 5896 metres. The waters of the mountain feed the seasonal swamps and marshes on which the game and birds, which live in the park, rely. It is here that photographers will hope to shoot the classic picture of the elephant or giraffe standing against the dramatic backdrop of the snow capped mountain. Lunch at the lodge. Dinner and overnight at Amboseli Serena Lodge (LDBB)

Day 03 – Amboseli National Park

Early morning game drive returning to the lodge for breakfast. Rest of the morning at leisure. Lunch. Afternoon game drive. Dinner and overnight at Amboseli Serena Lodge (LDBB)

Day 04 – Amboseli National Park/Ngorongoro Conservation Area

After breakfast drive to the border town of Namanga. Change of vehicles. Clear customs and immigration and continue to the town of Arusha for lunch. After lunch drive to the Ngorongoro Crater, the largest intact caldera in the world. Its enduring charm stems from its overwhelming physical beauty and the abundance of wildlife permanently resident on the crater floor for dinner and overnight at Ngorongoro Serena Lodge (LDBB)



Day 05 – Ngorongoro Conservation Area

After breakfast, depart for half-day tour of the crater floor. Return to your lodge for lunch. Afternoon at leisure. All meals and overnight at Ngorongoro Serena Lodge (LDBB)

Day 06 – Ngorongoro Conservation Area/Serengeti National Park

After breakfast, drive to the Serengeti National Park, undoubtedly the most famous wildlife sanctuary in the world, unequalled for its natural beauty and the greatest concentration of plains game anywhere. En route visit the Olduvai Gorge site of archeological findings, where traces of pre-historic man dating back to 3.5 million years ago have been discovered. Arrive for lunch at your lodge. Afternoon game drive until sunset. All meals and overnight at Serengeti Serena Lodge (LDBB)

Day 07 – Serengeti National Park

All day spent in the Serengeti with morning and afternoon game drives. All meals and overnight at Serengeti Serena Lodge (LDBB)

Day 08 - Serengeti National Park/Lake Manyara National Park

Breakfast at your lodge, then drive to Lake Manyara National Park, one of the Rift Valley's numerous alkaline lakes, which apart from its abundant bird life, is known for its tree-climbing lions. Arrive for lunch at your lodge. Afternoon game drive until sunset. Meals and overnight at Lake Manyara Serena Lodge (LDBB)

Day 09 – Lake Manyara National Park/Arusha/Nairobi/Departure

After breakfast drive to the town of Arusha for lunch. After lunch proceed to the border town of Namanga. Change of vehicles. Clear customs/immigration and continue to Nairobi. Drop off at Jomo Kenyatta Airport for your departure flight back home. A Africa Safari Discovery representative will re-confirm your onward flight, and assist you at check-in. End of our services.

SPLENDOURS OF TANZANIA (CLASSIC)

Tour Code : ASD026

Mt Kilimanjaro Safaris



ITINERARY AT A GLANCE

Day	Location	Accommodation	Board	Activity
01	Nairobi	Mountain Village	BB	TRSF
02	Ngorongoro	Ngorongoro Serena Lodge	LDBB	LE
03	Ngorongoro	Ngorongoro Serena Lodge	LDBB	CT, LE
04	Serengeti	Serengeti Serena Lodge	LDBB	P
05	Serengeti	Serengeti Serena Lodge	LDBB	E, A, P
06	Manyara	Lake Manyara Serena Lodge	LDBB	P
07	Departure		L	TRSF

L-Lunch, **D**-Dinner, **BB**-Bed and breakfast, **LDBB**-Lunch, dinner, bed and breakfast, **TRSF**-Transfer, **E**-Early morning game drive, **A**-Morning game drive, **P**-Afternoon game drive, **GV**-Game Viewing, **FLT**-Flight, **CT**-Crater Tour, **LE**-Leisure

DETAILED ITINERARY

Day 01 – Arrival In Kilimanjaro(Arusha)

Met upon arrival at Kilimanjaro International Airport by a Africa Safari Discovery representative. Assistance and transfer to your hotel. Rest of the day at leisure. Accommodation on bed & breakfast basis at Mountain Village(BB)

Day 02 – Arusha/Ngorongoro Conservation Area

Breakfast and rest of the morning at leisure. Lunch. After lunch drive to the Ngorongoro Crater, the largest intact caldera in the world. Its enduring charm stems from its overwhelming physical beauty and the abundance of wildlife permanently resident on the crater floor for dinner and overnight at Ngorongoro Serena Lodge (LDBB)

Day 03 – Ngorongoro Conservation Area

After breakfast, depart for half-day tour of the crater floor. Return to your lodge for lunch. Afternoon at leisure. All meals and overnight at Ngorongoro Serena Lodge (LDBB)

Day 04 – Ngorongoro Conservation Area/Serengeti National Park

After breakfast, drive to the Serengeti National Park, undoubtedly the most famous wildlife sanctuary in the world, unequalled for its natural beauty and the greatest concentration of plains game anywhere. En

route visit the Olduvai Gorge site of archaeological findings, where traces of pre-historic man dating back to 3.5 million years ago have been discovered. Arrive for lunch at your lodge. Afternoon game drive until sunset. All meals and overnight at Serengeti Serena Lodge (LDBB)

Day 05 – Serengeti National Park

All day spent in the Serengeti with morning and afternoon game drives. All meals and overnight at Serengeti Serena Lodge (LDBB)

Day 06 – Serengeti National Park/ Lake Manyara National Park

Breakfast at your lodge, then drive to Lake Manyara National Park, one of the Rift Valley's numerous alkaline lakes, which apart from its abundant bird life, is known for its tree-climbing lions. Arrive for lunch at your lodge. Afternoon game drive until sunset. Meals and overnight at Lake Manyara Serena Lodge (LDBB)

Day 07 – Lake Manyara National Park/Arusha/Departure

After breakfast drive to the town of Arusha for lunch. After lunch drop off at Kilimanjaro Airport for your departure flight back home. A Africa Safari Discovery representative will re-confirm your onward flight, and assist you at check-in.

End of our services.

TANZANIA MIGRATION SAFARI (CLASSIC)

Tour Code : ASD027

Mt Kilimanjaro Safaris



ITINERARY AT A GLANCE

Day	Location	Accommodation	Board	Activity
01	Ngorongoro	Ngorongoro Serena Lodge	LDBB	LE
02	Ngorongoro	Ngorongoro Serena Lodge	LDBB	CT, LE
03	Serengeti	Serengeti Serena Lodge	LDBB	P
04	Serengeti	Serengeti Serena Lodge	LDBB	E, A, P
05	Manyara	Lake Manyara Serena Lodge	LDBB	P
06	Departure		L	TRSF

L-Lunch, **D**-Dinner, **BB**-Bed and breakfast, **LDBB**-Lunch, dinner, bed and breakfast, **TRSF**-Transfer, **E**-Early morning game drive, **A**-Morning game drive, **P**-Afternoon game drive, **GV**-Game Viewing, **FLT**-Flight, **CT**-Crater Tour, **LE**-Leisure

DETAILED ITINERARY

Day 01 – Arusha/Ngorongoro Conservation Area

Pick up from your hotel in Arusha or from Kilimanjaro International Airport and proceed for lunch in Arusha Town. After lunch drive to the Ngorongoro Crater, the largest intact caldera in the world. Its enduring charm stems from its overwhelming physical beauty and the abundance of wildlife permanently resident on the crater floor for dinner and overnight at Ngorongoro Serena Lodge (LDBB)

Day 02 – Ngorongoro Conservation Area

After breakfast, depart for half-day tour of the crater floor. Return to your lodge for lunch. Afternoon at leisure.

All meals and overnight at Ngorongoro Serena Lodge (LDBB)

Day 03 – Ngorongoro Conservation Area/Serengeti National Park

After breakfast, drive to the Serengeti National Park, undoubtedly the most famous wildlife sanctuary in the world, unequalled for its natural beauty and the greatest concentration of plains game anywhere. En route visit the Olduvai Gorge site of archeological findings, where traces of pre-historic man dating back to 3.5 million years ago have been discovered. Arrive for lunch at your lodge. Afternoon game drive until sunset. All meals and overnight at Serengeti Serena Lodge (LDBB)

Day 04 – Serengeti National Park

All day spent in the Serengeti with morning and afternoon game drives. All meals and overnight at Serengeti Serena Lodge (LDBB)

Day 05 – Serengeti National Park/Lake Manyara National Park

Breakfast at your lodge, then drive to Lake Manyara National Park, one of the Rift Valley's numerous alkaline lakes, which apart from its abundant bird life, is known for its tree-climbing lions. Arrive for lunch at your lodge. Afternoon game drive until sunset. Meals and overnight at Lake Manyara Serena Lodge (LDBB)

Day 06 – Lake Manyara National Park/Arusha/Nairobi/Departure

After breakfast drive to the town of Arusha for lunch. After lunch drop off at Kilimanjaro Airport for your departure flight back home. A Africa Safari Discovery representative will re-confirm your onward flight, and assist you at check-in.

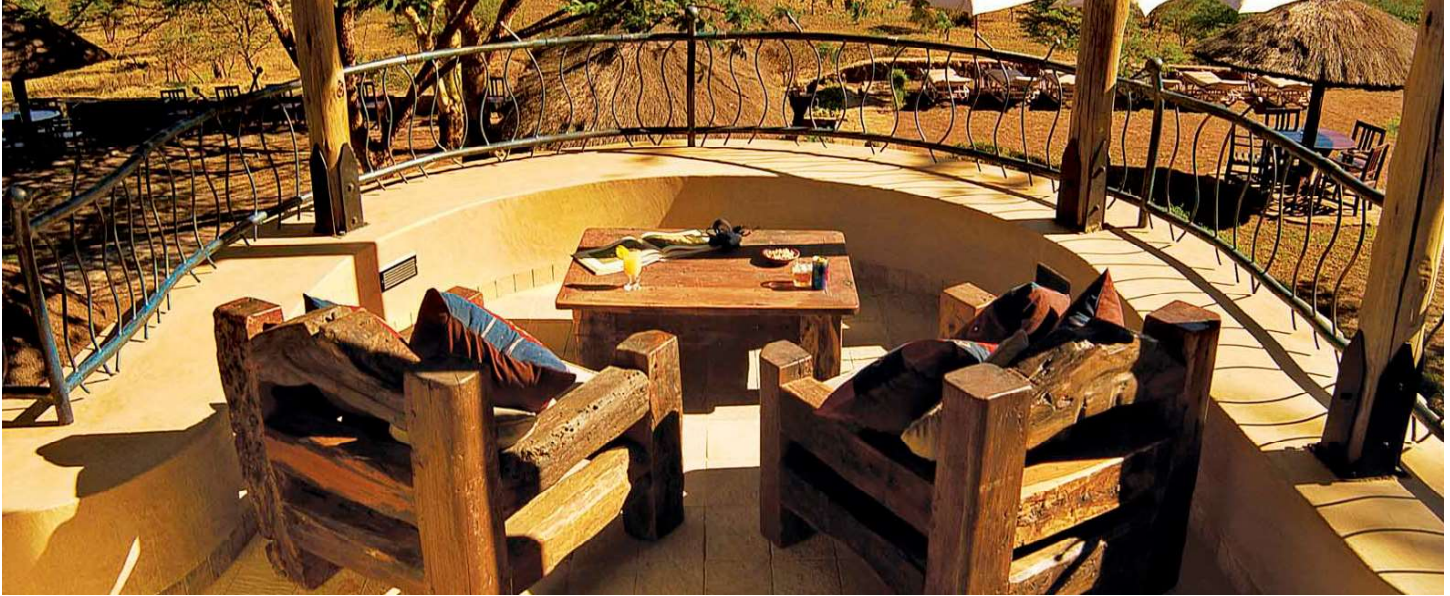
End of our services.



EAST AFRICA ODYSSEYS (CLASSIC)

Tour Code : ASD028

Mt Kilimanjaro Safaris



ITINERARY AT A GLANCE

Day	Location	Accommodation	Board	Activity
01	Nairobi	Panafric Hotel	BB	TRSF
02	Amboseli	Amboseli Sopa Lodge	LDBB	P
03	Amboseli	Amboseli Sopa Lodge	LDBB	E, P
04	Ngorongoro	Ngorongoro Sopa Lodge	LDBB	LE
05	Ngorongoro	Ngorongoro Sopa Lodge	LDBB	CT, LE
06	Serengeti	Serengeti Sopa Lodge	LDBB	P
07	Serengeti	Serengeti Sopa Lodge	LDBB	E, A, P
08	Tarangire	Tarangire Sopa Lodge	LDBB	P
09	Departure		L	TRSF

L-Lunch, D-Dinner, BB-Bed and breakfast, LDBB-Lunch, dinner, bed and breakfast, TRSF-Transfer, E-Early morning game drive, A-Morning game drive, P-Afternoon game drive, GV-Game Viewing, FLT-Flight, CT-Crater Tour, LE-Leisure

DETAILED ITINERARY

Day 01 – Arrival In Nairobi

Met upon arrival at Jomo Kenyatta International Airport by an Africa Safari Discovery representative. Assistance and transfer to your hotel. Rest of the day at leisure. Accommodation on bed & breakfast basis at The Panafric Hotel (BB)

Day 02 – Nairobi/Amboseli National Park

After breakfast drive to Amboseli National Park, lying below the most famous symbol of Africa, Mount Kilimanjaro. The 392 sq km Amboseli National Park lies due south of Nairobi, within clear sight of Mt Kilimanjaro, Africa's highest mountain at 5896 metres. The waters of the mountain feed the seasonal swamps and marshes on which the game and birds, which live in the park, rely. It is here that photographers will hope to shoot the classic picture of the elephant or giraffe standing against the dramatic backdrop of the snow capped mountain. Lunch at the lodge. Dinner and

overnight at Amboseli Sopa Lodge (LDBB)

Day 03 – Amboseli National Park

Early morning game drive returning to the lodge for breakfast. Rest of the morning at leisure. Lunch. Afternoon game drive. Dinner and overnight at Amboseli Sopa Lodge (LDBB)

Day 04 – Amboseli National Park/Ngorongoro Conservation Area

After breakfast drive to the border town of Namanga. Change of vehicles. Clear customs and immigration and continue to the town of Arusha for lunch. After lunch drive to the Ngorongoro Crater, the largest intact caldera in the world. Its enduring charm stems from its overwhelming physical beauty and the abundance of wildlife permanently resident on the crater floor for dinner and overnight at Ngorongoro Sopa Lodge (LDBB)

Day 05 – Ngorongoro Conservation Area

After breakfast, depart for half-day tour of the crater floor. Return to your lodge for lunch. Afternoon at leisure. All meals and overnight at Ngorongoro Sopa Lodge (LDBB)

Day 06 – Ngorongoro Conservation Area/Serengeti National Park

After breakfast, drive to the Serengeti National Park, undoubtedly the most famous wildlife sanctuary in the world, unequalled for its natural beauty and the greatest concentration of plains game anywhere. En route visit the Oldu-

vai Gorge site of archeological findings, where traces of pre-historic man dating back to 3.5 million years ago have been discovered. Arrive for lunch at your lodge. Afternoon game drive until sunset. All meals and overnight at Serengeti Sopa Lodge (LDBB)

Day 07 – Serengeti National Park

All day spent in the Serengeti with morning and afternoon game drives. All meals and overnight at Serengeti Sopa Lodge (LDBB)

Day 08 – Serengeti National Park/Tarangire National Park

Breakfast at your lodge, and then drive from to the Tarangire National Park, named after the Tarangire River which rises in Tanzania's central highland. The river lures thousands of plains game to its banks. Lunch en route at Lake Manyara Serena Lodge. Afternoon game drive en route to the lodge. Dinner and overnight at Tarangire Sopa Lodge (LDBB)

Day 09 – Tarangire National Park/Arusha/Nairobi/Departure

After breakfast drive to the town of Arusha for lunch. After lunch proceed to the border town of Namanga. Change of vehicles. Clear customs/immigration and continue to Nairobi. Drop off at Jomo Kenyatta Airport for your departure flight back home. A Africa Safari Discovery representative will re-confirm your onward flight, and assist you at check-in.

End of our services.

TANZANIA PHOTOGRAPHY SAFARI (CLASSIC)

Tour Code : ASD029

ITINERARY AT A GLANCE

Day	Location	Accommodation	Board	Activity
01	Nairobi	The Arusha Hotel	BB	TRSF
02	Ngorongoro	Ngorongoro Sopa Lodge	LDBB	LE
03	Ngorongoro	Ngorongoro Sopa Lodge	LDBB	CT, LE
04	Serengeti	Serengeti Sopa Lodge	LDBB	P
05	Serengeti	Serengeti Sopa Lodge	LDBB	E, A, P
06	Tarangire	Tarangire Sopa Lodge	LDBB	P
07	Departure		L	TRSF

L-Lunch, **D**-Dinner, **BB**-Bed and breakfast, **LDBB**-Lunch, dinner, bed and breakfast, **TRSF**-Transfer, **E**-Early morning game drive, **A**-Morning game drive, **P**-Afternoon game drive, **GV**-Game Viewing, **FLT**-Flight, **CT**-Crater Tour, **LE**-Leisure



DETAILED ITINERARY

Day 01 – Arrival In Kilimanjaro(Arusha)

Met upon arrival at Kilimanjaro International Airport by a Africa Safari Discovery representative. Assistance and transfer to your hotel. Rest of the day at leisure. Accommodation on bed & breakfast basis at The Arusha Hotel (BB)

Day 02 – Arusha/Ngorongoro Conservation Area

Breakfast and rest of the morning at leisure. Lunch. After lunch drive to the Ngorongoro Crater, the largest intact caldera in the world. Its enduring charm stems from its overwhelming physical beauty and the abundance of wildlife permanently resident on the crater floor for dinner and overnight at Ngorongoro Sopa Lodge (LDBB)

Day 03 – Ngorongoro Conservation Area

After breakfast, depart for half-day tour of the crater floor. Return to your lodge for lunch. Afternoon at leisure. All meals and overnight at Ngorongoro Sopa Lodge (LDBB)

Day 04 – Ngorongoro Conservation Area/ Serengeti National Park

After breakfast, drive to the Serengeti National Park, undoubtedly the most famous wildlife sanctuary in the world, unequalled for its natural beauty and the greatest concentration of plains game anywhere. En route visit the Olduvai Gorge site of archeological findings, where traces of pre-historic man dating back to 3.5 million years ago have been discovered. Arrive for lunch at your lodge. Afternoon game drive until sunset. All meals and overnight at Serengeti Sopa Lodge (LDBB)

Day 05 – Serengeti National Park

All day spent in the Serengeti with morning and afternoon game drives. All meals and overnight at Serengeti Sopa Lodge (LDBB)



Mt Kilimanjaro Safaris

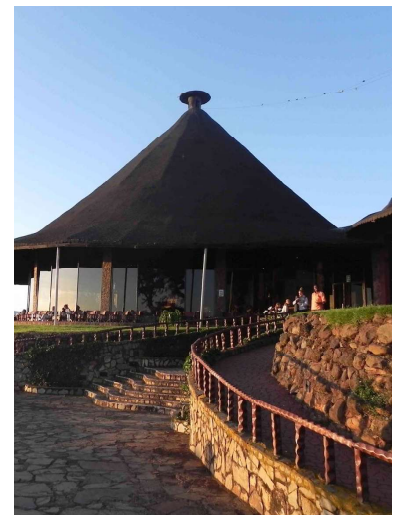
Day 06 – Serengeti National Park/Tarangire National Park

Breakfast at your lodge, and then drive from to the Tarangire National Park, named after the Tarangire River which rises in Tanzania's central highland. The river lures thousands of plains game to its banks. Lunch en route at Lake Man-yara Serena Lodge. Afternoon game drive en route to the lodge. Dinner and overnight at Tarangire Sopa Lodge (LDBB)

Day 07 – Tarangire National Park/Arusha/ Departure

After breakfast drive to the town of Arusha for lunch. After lunch drop off at Kilimanjaro Airport for your departure flight back home. A Africa Safari Discovery representative will re-confirm your onward flight, and assist you at check-in.

End of our services.



TANZANIA HIGHLIGHTS CLASSIC (CLASSIC)
Tour Code : ASD030

Mt Kilimanjaro Safaris



ITINERARY AT A GLANCE

Day	Location	Accommodation	Board	Activity
01	Ngorongoro	Ngorongoro Sopa Lodge	LDBB	LE
02	Ngorongoro	Ngorongoro Sopa Lodge	LDBB	CT, LE
03	Serengeti	Serengeti Sopa Lodge	LDBB	P
04	Serengeti	Serengeti Sopa Lodge	LDBB	E, A, P
05	Tarangire	Tarangire Sopa Lodge	LDBB	P
06	Departure		L	TRSF

L-Lunch, **D**-Dinner, **BB**-Bed and breakfast, **LDBB**-Lunch, dinner, bed and breakfast, **TRSF**-Transfer, **E**-Early morning game drive, **A**-Morning game drive, **P**-Afternoon game drive, **GV**-Game Viewing, **FLT**-Flight, **CT**-Crater Tour, **LE**-Leisure

DETAILED ITINERARY

Day 01 – Arusha/Ngorongoro Conservation Area

Pick up from your hotel in Arusha or from Kilimanjaro International Airport and proceed for lunch in Arusha Town. After lunch drive to the Ngorongoro Crater, the largest intact caldera in the world. Its enduring charm stems from its overwhelming physical beauty and the abundance of wildlife permanently resident on the crater floor for dinner and overnight at Ngorongoro Sopa Lodge (LDBB)

Day 02 – Ngorongoro Conservation Area

After breakfast, depart for half-day tour of the crater floor. Return to your lodge for lunch. Afternoon at leisure. All meals and overnight at Ngorongoro Sopa Lodge (LDBB)

Day 03 – Ngorongoro Conservation Area/Serengeti National Park

After breakfast, drive to the Serengeti National Park, undoubtedly the most famous wildlife sanctuary in the world, unequalled for its natural beauty and the greatest concentration of plains game anywhere. En route visit the Olduvai Gorge site of archeological findings, where traces of pre-historic man dating back to 3.5 million years ago have been

discovered. Arrive for lunch at your lodge. Afternoon game drive until sunset. All meals and overnight at Serengeti Sopa Lodge (LDBB)

Day 04 – Serengeti National Park

All day spent in the Serengeti with morning and afternoon game drives. All meals and overnight at Serengeti Sopa Lodge (LDBB)

Day 05 – Serengeti National Park/Tarangire National Park

Breakfast at your lodge, and then drive from to the Tarangire National Park, named after the Tarangire River which rises in Tanzania's central highland. The river lures thousands of plains game to its banks. Lunch en route at Lake Manyara Serena Lodge. Afternoon game drive en route to the lodge. Dinner and overnight at Tarangire Sopa Lodge (LDBB)

Day 06 – Tarangire National Park/Arusha/Departure

After breakfast drive to the town of Arusha for lunch. After lunch drop off at Kilimanjaro Airport for your departure flight back home. A Africa Safari Discovery representative will re-confirm your onward flight, and assist you at check-in.

End of our services.



RIFT VALLEY EXPLORER 4 X 4 (CLASSIC)

Tour Code : ASD031

Mt Kilimanjaro Safaris

ITINERARY AT A GLANCE

Day	Location	Accommodation	Board	Activity
01	Nairobi	Southern Sun Mayfair	BB	TRSF
02	Aberdares	The Ark Lodge	LDBB	GV
03	Nakuru/Naivasha	Great Rift Valley Lodge	LDBB	P
04	Masai Mara	Siana Springs Tented Camp	LDBB	P
05	Masai Mara	Siana Springs Tented Camp	LDBB	E, A, P
06	Departure		L	TRSF

L-Lunch, **D**-Dinner, **BB**-Bed and breakfast, **LDBB**-Lunch, dinner, bed and breakfast, **TRSF**-Transfer, **E**-Early morning game drive, **A**-Morning game drive, **P**-Afternoon game drive, **GV**-Game Viewing, **CT**-Crater Tour



DETAILED ITINERARY

Day 01 – Arrival Nairobi

Met upon arrival at Jomo Kenyatta International Airport by a Africa Safari Discovery representative. Assistance and transfer to your hotel. Accommodation on bed & breakfast basis at The Southern Sun Mayfair Hotel(BB)

Day 02 – Nairobi/Aberdare National Park

After breakfast drive to the Aberdares arriving in time for lunch at The Aberdare Country Club. After lunch transfer to the lodge situated inside the Aberdare National Park. Rest of the day at leisure with game viewing from the lodge. Dinner and overnight at The Ark Lodge (LDBB)

Day 03 – Aberdare National Park/Lake Nakuru National Park/Lake Naivasha

After breakfast you will be collected for the day's drive taking you past the Aberdares mountain range, via the Nyahururu waterfalls to the floor of the Great Rift Valley, destination Lake Nakuru National Park arriving in time for lunch at the lodge. After lunch proceed for an afternoon game drive and the proceed to Naivasha arriving in the evening for dinner and overnight at The Great Rift Valley Lodge (LDBB)

Day 04 – Lake Naivasha/Masai Mara National Reserve

After breakfast, drive to the Masai Mara National Reserve offering wonderful scenery and plenty of game. It is perhaps the only region left in Kenya where the visitor may see animals in the same super-abundance as existed a century ago. Arrive for lunch at your lodge. Afternoon game drive until sunset. Meals and overnight at Siana Springs Tented Camp(LDBB)

Day 05 – Masai Mara National Reserve

{Early morning optional balloon ride with champagne-style breakfast.}
Whole day in Mara with morning and afternoon game drives. Meals and overnight at Siana Springs Tented Camp (LDBB)



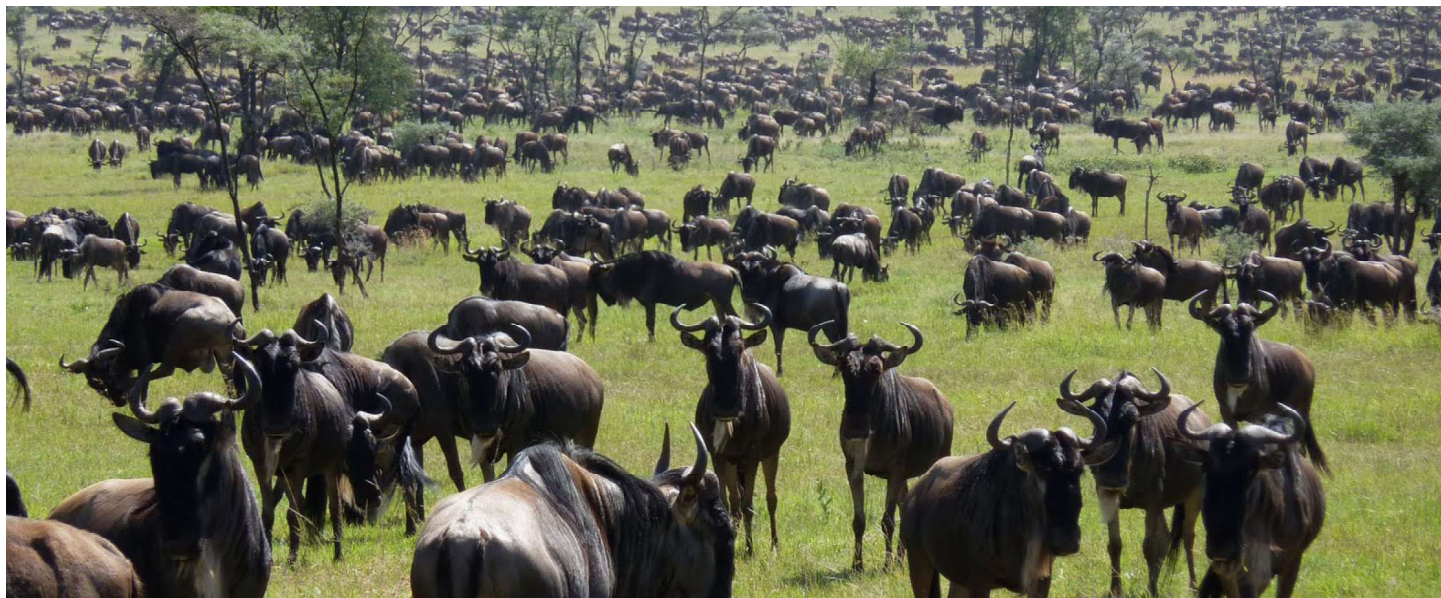
Day 06 – Masai Mara National Reserve/Nairobi/Departure

After breakfast drive to Nairobi arriving in time for lunch at The Carnivore Restaurant. After lunch drop off at your hotel or Jomo Kenyatta Airport for your departure flight back home. A Africa Safari Discovery representative will re-confirm your onward flight, and assist you at check-in. End of our services.



KENYA ESCAPEDE 4 X 4 (CLASSIC)
Tour Code : ASD032

Mt Kilimanjaro Safaris



ITINERARY AT A GLANCE

Day	Location	Accommodation	Board	Activity
01	Nairobi	Southern Sun Mayfair Hotel	BB	TRSF
02	Nakuru/Naivasha	Great Rift Valley Lodge	LDBB	P
03	Masai Mara	Siana Springs Tented Camp	LDBB	P
04	Masai Mara	Siana Springs Tented Camp	LDBB	E, A, P
05	Departure		L	TRSF

L-Lunch, **D**-Dinner, **BB**-Bed and breakfast, **LDBB**-Lunch, dinner, bed and breakfast, **TRSF**-Transfer, **E**-Early morning game drive, **A**-Morning game drive, **P**-Afternoon game drive, **GV** Game Viewing, **CT**-Crater Tour



DETAILED ITINERARY

Day 01 – Arrival Nairobi

Met upon arrival at Jomo Kenyatta International Airport by a Africa Safari Discovery representative. Assistance and transfer to your hotel. Accommodation on bed & breakfast basis at The Southern Sun Mayfair Hotel(BB)

Day 02 – Nairobi/Lake Nakuru National Park/Lake Naivasha

After breakfast you will be collected for the day's drive taking you to the floor of the Great Rift Valley, destination Lake Nakuru National Park arriving in time for lunch at the lodge. After lunch proceed for an afternoon game drive and then proceed to Naivasha arriving in the evening for dinner and overnight at The Great Rift Valley Lodge (LDBB)

Day 03 – Lake Naivasha/Masai Mara National Reserve

After breakfast, drive to the Masai Mara National Reserve offering wonderful scenery and plenty of game. It is perhaps the only region left in Kenya where the visitor may see animals in the same super-abundance as existed a century ago. Arrive for lunch at your lodge. Afternoon game drive. Until sunset. Meals and overnight at Siana Springs Tented Camp(LDBB)

Day 04 – Masai Mara National Reserve

{Early morning optional balloon ride with champagne-style breakfast.}



Whole day in Mara with morning and afternoon game drives. Meals and overnight at Siana Springs Tented Camp (LDBB)

Day 05 – Masai Mara National Reserve/Nairobi/Departure

After breakfast drive to Nairobi arriving in time for lunch at The Carnivore Restaurant. After lunch drop off at your hotel or Jomo Kenyatta Airport for your departure flight back home. A Africa Safari Discovery representative will re-confirm your onward flight, and assist you at check-in.

End of our services.



JAMBO SAFARI (CLASSIC)

Tour Code : ASD033

Mt Kilimanjaro Safaris

ITINERARY AT A GLANCE				
Day	Location	Accommodation	Board	Activity
01	Amboseli	Kibo Safari Camp	LDBB	P
02	Tsavo West	Voyager Safari Camp	LDBB	P
03	Tsavo East	Voi Wildlife Lodge	LDBB	P
04	Taita Hills	Taita Hills Lodge	LDBB	P
05	Departure		L	TRSF

L-Lunch,
D-Dinner,
BB-Bed and breakfast,
LDBB-Lunch, dinner, bed and breakfast,
TRSF-Transfer,
E-Early morning game drive,
A-Morning game drive,
P-Afternoon game drive,
GV-Game Viewing,
CT-Crater Tour



DETAILED ITINERARY

Day 01 – Nairobi/Amboseli National Park

Early morning pick up from your hotel in Nairobi or from Jomo Kenyatta International Airport and drive to Amboseli National Park arriving in time for lunch at Kibo Safari Camp. Afternoon game drive. Dinner and overnight at Kibo Safari Camp (LDBB)

Day 02 –Amboseli National Park/Tsavo West National Park

After breakfast drive to Tsavo West National Park arriving in time for lunch at Voyager Ziwani Camp. Afternoon game drive. Dinner and overnight at Voyager Ziwani Camp (LDBB)

Day 03 – Tsavo West National Park/Tsavo East National Park

After breakfast drive to Tsavo East National Park arriving in

time for lunch at Voi Wildlife Lodge. Afternoon game drive. Dinner and overnight at Voi Wildlife Lodge (LDBB)

Day 04 –Tsavo East Natrional Park/Taita Hills

After breakfast drive to Taita Hills arriving in time for lunch at Taita Hills Lodge. Afternoon game drive. Dinner and overnight at Taita Hills Lodge (LDBB)

Day 05 – Taita Hills/Nairobi/Departure

After breakfast drive to Nairobi arriving in time for lunch at The Carnivore Restaurant. After lunch drop off at your hotel or Jomo Kenyatta Airport for your departure flight back home. A Africa Safari Discovery representative will re-confirm your onward flight, and assist you at check-in.

End of our services.



TAVAO/TAITA HILLS EXPRESS (CLASSIC)

Tour Code : ASD034

Mt Kilimanjaro Safaris



ITINERARY AT A GLANCE

Day	Location	Accommodation	Board	Activity
01	Tsavo West	Voyager Safari Camp	LDBB	P
02	Tsavo East	Voi Wildlife Lodge	LDBB	P
03	Taita Hills	Taita Hills Lodge	LDBB	P
04	Departure		L	TRSF

L-Lunch, D-Dinner, BB-Bed and breakfast, LDBB-Lunch, dinner, bed and breakfast, TRSF-Transfer, E-Early morning game drive, A-Morning game drive, P-Afternoon game drive, GV-Game Viewing, CT-Crater Tour

DETAILED ITINERARY

Day 01 – Nairobi/Tsavo West National Park

Early morning pick up from your hotel in Nairobi or from Jomo Kenyatta International Airport and drive to Tsavo West National Park arriving in time for lunch at Voyager Ziwani Camp. Afternoon game drive. Dinner and overnight at Voyager Ziwani Camp (LDBB)

Day 02 – Tsavo West National Park/Tsavo East National Park

After breakfast drive to Tsavo East National Park arriving in time for lunch at Voi Wildlife Lodge. Afternoon game drive. Dinner and overnight at Voi Wildlife Lodge (LDBB)

Day 03 –Tsavo East National Park/Taita Hills

After breakfast drive to Taita Hills arriving in time for lunch at Taita Hills Lodge. Afternoon game drive. Dinner and overnight at Taita Hills Lodge (LDBB)

Day 04 – Taita Hills/Nairobi/Departure

After breakfast drive to Nairobi arriving in time for lunch at The Carnivore Restaurant. After lunch drop off at your hotel or Jomo Kenyatta Airport for your departure flight back home. A Africa Safari Discovery representative will re-confirm your onward flight, and assist you at check-in. End of our services.



BEST OF EAST AFRICA SAFARI 4 X 4 (LUXURY)

Tour Code : ASD035

Luxury Safaris

ITINERARY AT A GLANCE

Day	Location	Accommodation	Board	Activity
01	Nairobi	Fairmont Norfolk Hotel	BB	TRSF
02	Samburu	Samburu Intrepids Camp	LDBB	P
03	Samburu	Samburu Intrepids Camp	LDBB	E, P
04	Aberdares	The Fairmont Ark Lodge	LDBB	GV
05	Nakuru/Naivasha	Great Rift Valley Lodge	LDBB	P
06	Masai Mara	The Fairmont Mara Safari Club	LDBB	P
07	Masai Mara	The Fairmont Mara Safari Club	LDBB	E, A, P
08	Serengeti	Kirawira Camp	LDBB	P
09	Serengeti	Kirawira Camp	LDBB	E, A, P
10	Ngorongoro	Ngorongoro Serena Lodge	LDBB	LE
11	Ngorongoro	Ngorongoro Serena Lodge	LDBB	CT, LE
12	Manyara	Lake Manyara Serena Lodge	LDBB	P
13	Departure			TRSF

L-Lunch, **D**-Dinner, **BB**-Bed and breakfast, **LDBB**-Lunch, dinner, bed and breakfast, **TRSF**-Transfer, **E**-Early morning game drive, **A**-Morning game drive, **P**-Afternoon game drive, **GV**-Game Viewing, **CT**-Crater Tour



DETAILED ITINERARY

Day 01 – Arrival Nairobi

Met upon arrival at Jomo Kenyatta International Airport by a Africa Safari Discovery representative. Assistance and transfer to your hotel. Accommodation on bed & breakfast basis at The Fairmont Norfolk Hotel (BB)

Day 02 – Nairobi/Samburu National Reserve

After breakfast, drive north via Nanyuki and Mt Kenya to the Samburu National Reserve. Rugged and remote, this wildlife reserve provides some the best and most colourful game viewing in the country arriving in time for lunch at your camp. Afternoon game drive. Dinner and overnight at Samburu Intrepids Camp (LDBB)

Day 03 – Samburu National Reserve

Early morning game drive returning to the lodge for breakfast. Rest of the morning at leisure. Lunch. Afternoon game drive. Dinner and overnight at Samburu Intrepids Camp (LDBB)

Day 04 – Samburu National Reserve/ Aberdare National Park

After breakfast drive to the Aberdares arriving in time for lunch at The Aberdare Country Club. After lunch transfer to the lodge situated inside the Aberdare National Park. Rest of the day at leisure with game viewing from the lodge. Dinner and overnight at The Ark Lodge (LDBB)

Day 05 – Aberdare National Park/Lake Nakuru National Park/Lake Naivasha

After breakfast you will be collected for the day's drive taking you past the Aberdares mountain range, via the Nyahururu waterfalls to the floor of the Great Rift Valley, destination Lake Nakuru National Park arriving in time for lunch at the lodge. After lunch proceed for an afternoon game drive and the proceed to Naivasha arriving in the evening for dinner and overnight at The Great Rift Valley Lodge (LDBB)

Day 06 – Lake Naivasha/Masai Mara National Reserve

After breakfast, drive to the Masai Mara National Reserve offering wonderful scenery and plenty of game. It is perhaps the only region left in Kenya where the visitor may see animals in the same super-abundance as existed a century ago. Arrive for lunch at your lodge. Afternoon game drive. Until sunset. Meals and overnight at Fairmont Mara Safari Club (LDBB)

Day 07 – Masai Mara National Reserve

(Early morning optional balloon ride with

champagne-style breakfast.) Whole day in Mara with morning and afternoon game drives. Meals and overnight at Fairmont Mara Safari Club (LDBB)

Day 08 – Masai Mara National Reserve/Serengeti National Park

After breakfast, drive to the border town of Isebania where you will go through the normal immigration and customs procedures. Proceed in Tanzanian vehicle to Serengeti National Park. Picnic lunch en-route. Afternoon game drive en route to your camp. Dinner and overnight at Kirawira Camp (LDBB)

Day 09 – Serengeti National Park

All day spent in the Serengeti with morning and afternoon game drives. Meals and overnight at Kirawira Camp (LDBB)

Day 10 – Serengeti National Park/ Ngorongoro Conservation Area

After breakfast, drive to the Ngorongoro Crater, the largest intact caldera in the world. Its enduring charm stems from its overwhelming physical beauty and the

abundance of wildlife permanently resident on the crater floor. En route visit the Olduvai Gorge site of archeological findings, where traces of pre-historic man dating back to 3.5 million years ago have been discovered. Arrive at your lodge for lunch. Afternoon at leisure. Meals and overnight at Ngorongoro Serena Lodge (LDBB)

Day 11 – Ngorongoro Conservation Area

After breakfast, depart for half-day tour of the crater floor. Return to your lodge for lunch. Afternoon at leisure. Meals and overnight at Ngorongoro Serena Lodge (LDBB)

Day 12 – Ngorongoro Conservation Area/Lake Manyara National Park

Breakfast at your lodge, then drive to Lake Manyara National Park, one of the Rift Valley's numerous alkaline lakes, which apart from its abundant bird life, is known for its tree-climbing lions. Arrive for lunch at your lodge. Afternoon game drive until sunset. Meals and overnight at Lake Manyara Serena Lodge (LDBB)

Day 13 – Lake Manyara National Park/ Arusha/Departure

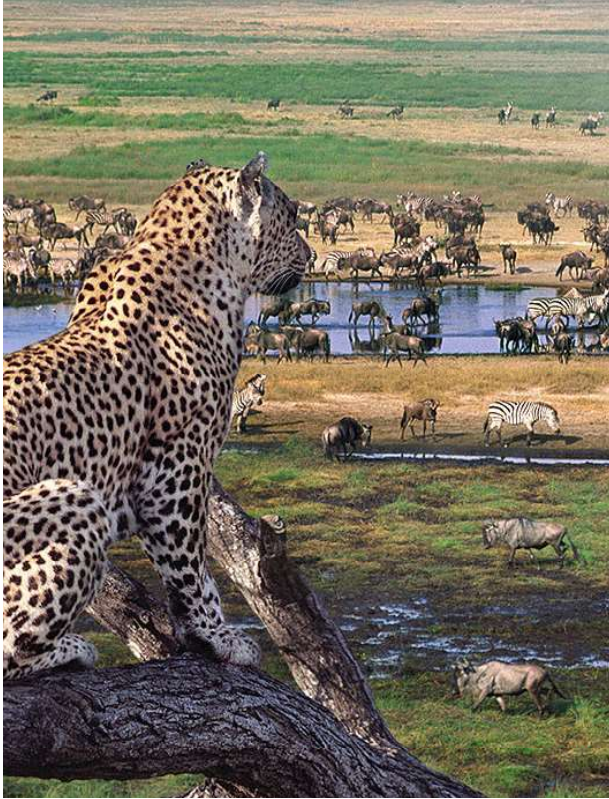
After breakfast, drive to Arusha for lunch. Optional day room. In the evening transfer to Kilimanjaro International Airport for your departure flight back home. A Africa Safari Discovery representative will re-confirm your onward flight, and assist you at check-in.

End of our services.



EAST AFRICAN HIGHLIGHTS 4 X 4 (LUXURY)
Tour Code : ASD036

Luxury Safaris



ITINERARY AT A GLANCE

Day	Location	Accommodation	Board	Activity
01	Nairobi	Fairmont Norfolk Hotel	BB	TRSF
02	Masai Mara	The Fairmont Mara Safari Club	LDBB	P
03	Masai Mara	The Fairmont Mara Safari Club	LDBB	E, A, P
04	Serengeti	Kirawira Camp	LDBB	P
05	Serengeti	Kirawira Camp	LDBB	E, A, P
06	Ngorongoro	Ngorongoro Serena Lodge	LDBB	LE
07	Ngorongoro	Ngorongoro Serena Lodge	LDBB	CT, LE
08	Manyara	Lake Manyara Serena Lodge	LDBB	P
09	Amboseli	Serena Lodge	LDBB	P
10	Amboseli	Amboseli Serena Lodge	LDBB	E, P
11	Departure			TRSF

L-Lunch, **D**-Dinner, **BB**-Bed and breakfast, **LDBB**-Lunch, dinner, bed and breakfast, **TRSF**-Transfer, **E**-Early morning game drive, **A**-Morning game drive, **P**-Afternoon game drive, **GV**-Game Viewing, **CT**-Crater Tour

DETAILED ITINERARY

Day 01 – Arrival Nairobi

Met upon arrival at Jomo Kenyatta International Airport by a Africa Safari Discovery representative. Assistance and transfer to your hotel. Accommodation on bed & breakfast basis at The Fairmont Norfolk Hotel (BB)

Day 02 – Nairobi/Masai Mara National Reserve

After breakfast, drive to the Masai Mara National Reserve offering wonderful scenery and plenty of game. It is perhaps the only region left in Kenya where the visitor may see animals in the same super-abundance as existed a century ago. Arrive for lunch at your lodge. Afternoon game drive. Until sunset. Meals and overnight at Fairmont Mara safari Club (LDBB)

Day 03 – Masai Mara National Reserve

{Early morning optional balloon ride with champagne-style breakfast.} Whole day in Mara with morning and afternoon game drives. Meals and overnight at Fairmont Mara safari Club (LDBB)

Day 04 – Masai Mara National Reserve/Serengeti National Park

After breakfast, drive to the border town of Is-ebania where you will go through the normal immigration and customs procedures. Proceed in Tanzanian vehicle to Serengeti National Park. Picnic lunch en-route. Afternoon game drive en route to your camp. Dinner and overnight at Kirawira Camp (LDBB)

Day 05 – Serengeti National Park

All day spent in the Serengeti with morning and afternoon game drives. Meals and overnight at Kirawira Camp (LDBB)

Day 06 – Serengeti National Park/Ngorongoro Conservation Area

After breakfast, drive to the Ngorongoro Crater, the largest intact caldera in the world. Its enduring charm stems from its overwhelming physical beauty and the abundance of wildlife permanently resident on the crater floor. En route visit the Olduvai Gorge site of archeological findings, where traces of pre-historic man dating back to 3.5 million years ago have been discovered. Arrive at your lodge for lunch. Afternoon at leisure. Meals and overnight at Ngorongoro Serena Lodge (LDBB)

Day 07 – Ngorongoro Conservation Area

After breakfast, depart for half-day tour of the crater floor. Return to your lodge for lunch. Afternoon at leisure. Meals and overnight at Ngorongoro Serena Lodge (LDBB)

Day 08 – Ngorongoro Conservation Area/Lake Manyara National Park

Breakfast at your lodge, then drive to Lake Manyara National Park, one of the Rift Valley's numerous alkaline lakes, which apart from its abundant bird life, is known for its tree-climbing lions. Arrive for lunch at your lodge. Afternoon game drive until sunset. Meals and overnight at Lake Manyara Serena Lodge (LDBB)

Day 09 – Lake Manyara National Park/Amboseli National Park

After breakfast, drive to the border town of Namanga where you will clear customs and immigration formalities. Proceed in Kenyan vehicles to Amboseli with game drive enroute arriving at the lodge in time for Lunch, after lunch go for an afternoon game drive returning to the lodge for Dinner and overnight at the Amboseli Serena lodge (LDBB)

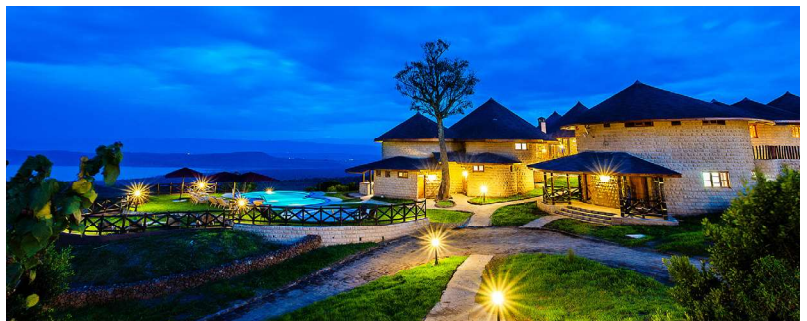
Day 10 – Amboseli National Park

Day spent in Amboseli National Park with morning and afternoon game drives. Meals and overnight at Amboseli Serena Lodge (LDBB)

Day 11 – Amboseli National Park/Nairobi/Departure

After breakfast, drive to Nairobi, in the evening proceed for a farewell dinner at the Carnivore Restaurant and later drop off at Jomo Kenyatta Airport for your departure flight back home. A Africa Safari Discovery representative will re-confirm your onward flight, and assist you at check-in.

End of our services.



CLASSIC EAST AFRICA 4 X 4 (LUXURY)

Tour Code : ASD037

Luxury Safaris

ITINERARY AT A GLANCE

Day	Location	Accommodation	Board	Activity
01	Nairobi	Fairmont Norfolk Hotel	LDBB	TRSF
02	Masai Mara	The Fairmont Mara Safari Club	LDBB	P
03	Masai Mara	The Fairmont Mara Safari Club	LDBB	E, A, P
04	Serengeti	Kirawira Camp	LDBB	P
05	Serengeti	Kirawira Camp	LDBB	E, A, P
06	Ngorongoro	Ngorongoro Serena Lodge	LDBB	LE
07	Ngorongoro	Ngorongoro Serena Lodge	LDBB	CT, LE
08	Manyara	Lake Manyara Serena Lodge	LDBB	P
09	Departure			TRSF

L-Lunch,
D-Dinner,
BB-Bed and breakfast,
LDBB-Lunch, dinner, bed and breakfast,
TRSF-Transfer,
E-Early morning game drive,
A-Morning game drive,
P-Afternoon game drive,
GV-Game Viewing,
CT-Crater Tour



DETAILED ITINERARY

Day 01 – Arrival Nairobi

Met upon arrival at Jomo Kenyatta International Airport by a Africa Safari Discovery representative. Assistance and transfer to your hotel. Accommodation on bed & breakfast basis at The Fairmont Norfolk Hotel (BB)

Day 02 – Nairobi/Masai Mara National Reserve

After breakfast, drive to the Masai Mara National Reserve offering wonderful scenery and plenty of game. It is perhaps the only region left in Kenya where the visitor may see animals in the same super-abundance as existed a century ago. Arrive for lunch at your lodge. Afternoon game drive. Until sunset. Meals and overnight at Fairmont Mara safari Club (LDBB)

Day 03 – Masai Mara National Reserve

{Early morning optional balloon ride with champagne-style breakfast.}

Whole day in Mara with morning and afternoon game drives. Meals and overnight at Fairmont Mara safari Club (LDBB)

Day 04 – Masai Mara National Reserve/Serengeti National Park

After breakfast, drive to the border town of Isebania where you will go through the normal immigration and customs procedures. Proceed in Tanzanian vehicle to Serengeti National Park. Picnic lunch en route. Afternoon game drive en route to your camp. Dinner and overnight at Kirawira Camp (LDBB)

Day 05 – Serengeti National Park

All day spent in the Serengeti with morning and afternoon game drives. Meals and overnight at Kirawira Camp (LDBB)

Day 06 – Serengeti National Park/Ngorongoro Conservation Area

After breakfast, drive to the Ngorongoro Crater, the largest intact caldera in the world. Its enduring charm stems from its overwhelming physical beauty and the abundance of wildlife permanently resident on the crater floor. En route visit the Olduvai Gorge site of archeological find-



ings, where traces of pre-historic man dating back to 3.5 million years ago have been discovered. Arrive at your lodge for lunch. Afternoon at leisure. Meals and overnight at Ngorongoro Serena Lodge (LDBB)

Day 07 – Ngorongoro Conservation Area

After breakfast, depart for half-day tour of the crater floor. Return to your lodge for lunch. Afternoon at leisure. Meals and overnight at Ngorongoro Serena Lodge (LDBB)

Day 08 – Ngorongoro Conservation Area/Lake Manyara National Park

Breakfast at your lodge, then drive to Lake Man-

yara National Park, one of the Rift Valley's numerous alkaline lakes, which apart from its abundant bird life, is known for its tree-climbing lions. Arrive for lunch at your lodge. Afternoon game drive until sunset. Meals and overnight at Lake Manyara Serena Lodge (LDBB)

Day 09 – Lake Manyara National Park/Arusha/Departure

After breakfast, drive to Arusha for lunch. Optional day room. In the evening transfer to Kilimanjaro International Airport for your departure flight back home. A Africa Safari Discovery representative will re-confirm your onward flight, and assist you at check-in.

End of our services.



SPLENDOURS OF KENYA 4 X 4 (LUXURY)

Tour Code : ASD038

Luxury Safaris

ITINERARY AT A GLANCE

Day	Location	Accommodation	Board	Activity
01	Nairobi	Southern Sun Mayfair Hotel	BB	TRSF
02	Samburu	Samburu Intrepids Camp	LDBB	P
03	Samburu	Samburu Intrepids Camp	LDBB	E, P
04	Aberdares	The Fairmont Ark Lodge	LDBB	CV
05	Nakuru/Naivasha	Great Rift Valley Lodge	LDBB	P
06	Masai Mara	Siana Springs Tented Camp	LDBB	P
07	Masai Mara	Siana Springs Tented Camp	LDBB	E, A, P
08	Departure		L	TRSF

L-Lunch, **D**-Dinner, **BB**-Bed and breakfast, **LDBB**-Lunch, dinner, bed and breakfast, **TRSF**-Transfer, **E**-Early morning game drive, **A**-Morning game drive, **P**-Afternoon game drive, **GV**-Game Viewing, **CT**-Crater Tour



DETAILED ITINERARY

Day 01 – Arrival Nairobi

Met upon arrival at Jomo Kenyatta International Airport by a Africa Safari Discovery representative. Assistance and transfer to your hotel. Accommodation on bed & breakfast basis at The Southern Sun Mayfair Hotel(BB)

Day 02 – Nairobi/Samburu National Reserve

After breakfast, drive north via Nanyuki and Mt Kenya to the Samburu National Reserve. Rugged and remote, this wildlife reserve provides some the best and most colourful game viewing in the country arriving in time for lunch at your camp. Afternoon game drive. Dinner and overnight at Samburu Intrepids Camp (LDBB)

Day 03 –Samburu National Reserve

Early morning game drive returning to the lodge for breakfast. Rest of the morning at leisure. Lunch. Afternoon game drive. Dinner and overnight at Samburu Intrepids Camp (LDBB)

Day 04 – Samburu National Reserve/Aberdare National Park

After breakfast drive to the Aberdares arriving in time for lunch at The Aberdare Country Club. After lunch transfer to the lodge situated inside the Aberdare National Park. Rest of the day at leisure with game viewing from the lodge. Dinner and overnight at The Ark Lodge (LDBB)

Day 05 – Aberdare National Park/Lake Nakuru National Park/Lake Naivasha

After breakfast you will be collected for the day's drive taking you past the Aberdares mountain range, via the Nyahururu waterfalls to the floor of the Great Rift Valley, destination Lake Nakuru National Park arriving in time for lunch at the lodge. After lunch proceed for an afternoon game drive and the proceed to Naivasha arriving in the evening for dinner and overnight at The Great Rift Valley Lodge (LDBB)

Day 06 – Lake Naivasha/Masai Mara National Reserve

After breakfast, drive to the Masai Mara National Reserve offering wonderful scenery and plenty of game. It is per-

haps the only region left in Kenya where the visitor may see animals in the same super-abundance as existed a century ago. Arrive for lunch at your lodge. Afternoon game drive. Until sunset. Meals and overnight at Siana Springs Tented Camp(LDBB)

Day 07 – Masai Mara National Reserve

{Early morning optional balloon ride with champagne-style breakfast.} Whole day in Mara with morning and afternoon game drives. Meals and overnight at Siana Springs Tented Camp (LDBB)

Day 08 – Masai Mara National Reserve/Nairobi/Departure

After breakfast drive to Nairobi arriving in time for lunch at The Carnivore Restaurant. After lunch drop off at your hotel or Jomo Kenyatta Airport for your departure flight back home. A Africa Safari Discovery representative will re-confirm your onward flight, and assist you at check-in.

End of our services.



WINGS OVER KENYA (LUXURY)
Tour Code : ASD039

Luxury Safaris

L-Lunch, D-Dinner, BB-Bed and breakfast, LDBB-Lunch, dinner, bed and breakfast, TRSF-Transfer, E-Early morning game drive, A-Morning game drive, P-Afternoon game drive, GV-Game Viewing, FLT-Flight

ITINERARY AT A GLANCE

Day	Location	Accommodation	Board	Activity
01	Nairobi	Ngong House BB	TRSF	
02	Amboseli N. Park	Tortilis Luxury Camp	LDBB	FLT, P
03	Amboseli N. Park	Tortilis Luxury Camp	LDBB	A, P
04	Samburu	Larsens Luxury Camp	LDBB	FLT, P
05	Samburu	Larsens Luxury Camp	LDBB	A, P
06	Masai Mara	Olonana Luxury Camp	LDBB	FLT, P
07	Masai Mara	Olonana Luxury Camp	LDBB	A, P
08	Masai Mara	Olonana Luxury Camp	LDBB	A, P
09	Departure	Day room Norfolk Hotel	L	FLT, TRSF

DETAILED ITINERARY

Day 01 – Arrival Nairobi
Arrive at Jomo Kenyatta Int'l Airport, met by our representative and transferred to your hotel. Overnight Ngong House (BB)

Day 02 – Nairobi/Amboseli National Park
Breakfast at the hotel. Check out and Transfer to Wilson Airport to catch your scheduled flight to Amboseli, situated at the foothills of the highest mountain in Africa. Afternoon game drive. Dinner and overnight at Tortilis Luxury Camp (LDBB)

Day 03 – Amboseli National Park
Full day in Amboseli with morning and afternoon game drives. Enjoy the activities and facilities offer at the camp. All meals and overnight Tortilis Luxury Camp (LDBB)

Day 04 – Amboseli National Park/Samburu National Reserve
Breakfast at the camp. Early morning game drive to the airstrip for your flight back to Nairobi. On arrival board your flight to Samburu G. Reserve. Met at the airstrip and transferred to Larsens Camp. Check in and be shown to your rooms. Lunch at the camp. Enjoy an afternoon game drive returning to the camp for dinner and overnight Larsens Luxury Camp (LDBB)

Day 05 – Samburu National Reserve
Ewaso Nyiro river, the only water source in the region, bisects the three reserves of Shaba, Buffalo Springs and Samburu. The river's permanent waters abound with crocodile, hippo and plenty of wildlife including the peculiar Grevy zebra, Gerenuk, Beisa Oryx and the comical Somali Ostrich, unique to these northern parts. Morning and afternoon game drives in the Samburu and Buffalo Springs National Reserves. All meals and overnight at Larsens Luxury Camp (LDBB)

Day 06 – Samburu National Reserve/Masai Mara National Reserve
Breakfast at the camp. Check out and be transferred to the airstrip for your flight to the Masai Mara, A wonderful wildlife haven renowned for high predator population and the incredible wildebeest migration. Met on arrival by the camps driver guides and with an en route game drive transferred to the camp. Lunch at the camp. Afternoon game drive in the reserve where there's plenty to see including the plain's wide variety of wild game. Dinner and overnight at Olonana Luxury Camp (LDBB)

Days 07 & 08 – Masai Mara National Reserve
Two (2) full days in the Mara with morning and afternoon game drive. Breakfast, lunch and dinner. Enjoy the facilities and activities at the Camp. Overnight at Olonana Luxury Camp (L,D,B).
Optional
0600 hrs Optional balloon ride across the Masai Mara Reserve. The BALLOON SAFARI adventure begins in the pre-dawn hours. The magnificent view of the park is thrilling. Towards the end of the safari, you rise to a height of 1500 feet for a panoramic view of the twisting Mara River and the savanna below. After an hour or so in the air, your safari finishes with a flourish: a champagne breakfast in the bush, cooked on the balloon's burners.

Day 09 – Masai Mara National Reserve/Nairobi/Departure
Breakfast at the camp. Check out and be transferred to the airstrip for your flight back to Nairobi. Lunch on arrival at the Carnivore restaurant. Transfer to Norfolk Hotel booked on a day room. Later evening transfer to JKIA for your outbound flight. A Africa Safari Discovery representative will re-confirm your onward flight, and assist you at check-in.

End of our services.



MEMORIES OF KENYA (LUXURY)

Tour Code : ASD040



Luxury Safaris

ITINERARY AT A GLANCE

Day	Location	Accommodation	Board	Activity
01	Nairobi	The Fairmont Norfolk	BB	TRSF
02	Laikipia	Loisaba Lodge/Ol Malo	LDBB	FLT, P
03	Laikipia	Loisaba Lodge/Ol Malo	LDBB	A, P
04	Samburu	Larsens Luxury Camp	LDBB	FLT, P
05	Samburu	Larsens Luxury Camp	LDBB	A, P
06	Masai Mara	The Fairmont Mara Safari Club	LDBB	FLT, P
07	Masai Mara	The Fairmont Mara Safari Club	LDBB	A, P
08	Maasai Mara	The Fairmont Mara Safari Club	LDBB	A, P
09	Departure	Day room Norfolk Hotel	L	FLT, TRSF

L-Lunch, **D**-Dinner, **BB**-Bed and breakfast, **LDBB**-Lunch, dinner, bed and breakfast, **TRSF**-Transfer, **E**-Early morning game drive, **A**-Morning game drive, **P**-Afternoon game drive, **GV**-Game Viewing, **FLT**-Flight

DETAILED ITINERARY

Day 01 – Arrival Nairobi

Arrive at Jomo Kenyatta Int'l Airport, met by our representative and transferred to your hotel. Overnight The Fairmont Norfolk (BB)

Day 02 – Arrival Nairobi

Breakfast at the hotel. Check out and Transfer to Wilson Airport to catch your scheduled flight to Loisaba, Located in Laikipia area. Met on arrival by the camps drive guides and transferred to the camp. Afternoon game drive. Dinner and overnight at Loisaba Lodge or Ol Malo Luxury Camp (LDBB)

Day 03 -Laikipia

Full day in Laikipia with morning and afternoon game drives. Enjoy the activities and facilities offer at the camp. All meals and overnight Loisaba Lodge or Ol Malo Luxury Camp (LDBB)

Day 04 – Laikipia/Samburu National Reserve

Early morning game drive. Breakfast at the camp. Check out and be transferred to the airstrip for your flight to Samburu G. Reserve. Met at the airstrip and transferred to Larsens Camp. Check in and be shown to your rooms. Lunch at the camp. Enjoy an afternoon game drive returning to the camp. Dinner and overnight Larsens Luxury Camp (LDBB)

Day 05 –Samburu National Reserve

Ewaso Nyiro river, the only water source in the region, bisects the three reserves of Shaba, Buffalo Springs and Samburu. The river's permanent waters abound with crocodile, hippo and plenty of wildlife including the peculiar Grevy zebra, Gerenuk, Beisa Oryx and the comical Somali Ostrich, unique to these northern parts. Morning and afternoon game drives in the Samburu and Buffalo Springs National Reserves. All meals and overnight at Larsens Luxury Camp (LDBB)

Day 06 –Samburu National Reserve – Masai Mara National Reserve

Breakfast at the camp. Check out and be transferred to the airstrip for your flight to the Masai Mara, A wonderful wildlife haven renowned for high predator population and the incredible wildebeest migration. Met on arrival by the camps driver guides and with an en route game drive transferred to the camp. Lunch at the camp. Afternoon game drive in the reserve where there's plenty to see including the plain's wide variety of wild game. Dinner and overnight at The Fairmont Mara Safari Club (LDBB)

Days 07 & 08 – Masai Mara National Reserve
Two (2) full days in the Mara with morning and afternoon game drive. Breakfast, lunch and dinner. Enjoy the facilities and activities at the Camp. Overnight at The Fairmont Mara Safari Club (LDBB)

*Optional
0600 hrs Optional balloon ride across the Masai Mara Reserve. The BALLOON SAFARI adventure begins in the pre-dawn hours. The magnificent view of the park is thrilling. Towards the end of the safari, you rise to a height of 1500 feet for a panoramic view of the twisting Mara River and the savanna below. After an hour or so in the air, your safari finishes with a flourish: a champagne breakfast in the bush, cooked on the balloon's burners.*

Day 09 – Masai Mara National Reserve/Nairobi/Departure

Breakfast at the camp. Check out and be transferred to the airstrip for your flight back to Nairobi. Lunch on arrival at the Carnivore restaurant. Transfer to Norfolk Hotel booked on a day room. Later evening transfer to JKIA for your outbound flight. A Africa Safari Discovery representative will re-confirm your onward flight, and assist you at check-in.

End of our services.

THE ULTIMATE TANZANIA SAFARI (LUXURY)

Tour Code : ASD041

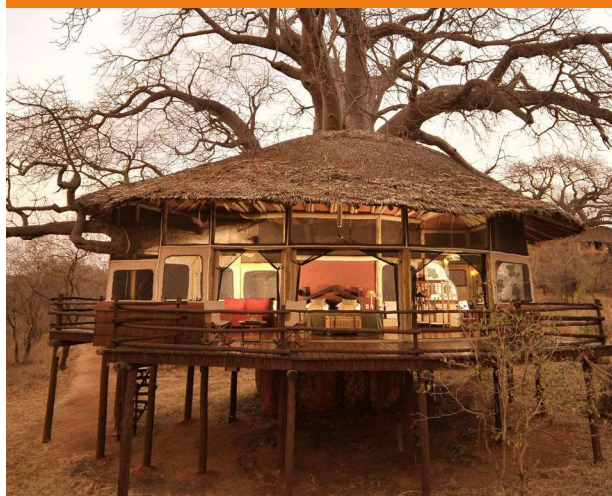
Luxury Safaris



ITINERARY AT A GLANCE

Day	Location	Accommodation	Board	Activity
01	Arusha	Arusha Coffee Lodge	BB	TRSF
02	Tarangire N. P	Tarangire Treetops	LDBB	P
03	Tarangire N. P	Tarangire Treetops	LDBB	A, P
04	Ngorongoro Crater	The Manor at Ngorongoro	LDBB	LE
05	Ngorongoro Crater	The Manor at Ngorongoro	LDBB	CT
06	Serengeti N. P	Serengeti Migration Camp	LDBB	P
07	Serengeti N. P	Serengeti Migration Camp	LDBB	A, P
08	Departure		L	FLT, TRSF

L-Lunch, **D**-Dinner, **BB**-Bed and breakfast, **LDBB**-Lunch, dinner, bed and breakfast, **TRSF**-Transfer, **E**-Early morning game drive, **A**-Morning game drive, **P**-Afternoon game drive, **GT**-Crater Tour, **LE**-Leisure, **FLT**-Flight



FULL ITINERARY

Day 01 – Arrival Arusha

Arrive at JRO Int'l Airport, met by our representative and transferred to your hotel. Overnight Arusha Coffee Lodge (BB)

Day 02 – Arusha/Tarangire National Park
Breakfast at the lodge. Check out and drive to Tarangire National Park. On arrival you will be transferred Tarangire Tree Lodge. Check in and be shown to your rooms. Lunch at the lodge. Enjoy an afternoon game drive in the park returning to the lodge for dinner. Dinner and overnight Tarangire Treetops (LDBB)

Day 03 – Tarangire National Park
About 120km south of Arusha on the Dodoma road, Tarangire rivals the Serengeti for the size of the game herds that congregate here. Many of the animals crowd around the only source of permanent water in the park, the Tarangire River. Morning and afternoon game drive in the park. Enjoy the activities offered at the lodge. All meals and overnight at Tarangire Treetops (LDBB)

Day 04 – Tarangire National Park/Ngorongoro Conservation Area
Depart for a morning game drive in the Park. Lunch at the lodge. After lunch drive to Ngorongoro Conservation Area for dinner and overnight The Manor at Ngorongoro (LDBB)

Day 05 – Ngorongoro Conservation Area
Today you will descend 2000 feet (Over 600 metres) to the floor of the crater for a day crater tour with picnic lunches. Explore the forest

areas that are inhabited by monkeys and elephants, the lake area, where you may see the flamingos and the open savannah where the lions hunt for food. Dinner and overnight at The Manor at Ngorongoro (LDBB)

Day 06 – Ngorongoro Conservation Area/ Serengeti National Park

Breakfast at the camp. Check out and drive to Olduvai Gorge, site of Louis and Mary Leakey's renowned archaeological discoveries. Their findings include some of the man's earliest known ancestral remains. Continue driving to Serengeti National Park. Lunch at the camp on arrival. Afternoon game drive. Dinner and overnight Serengeti Migration Camp (LDBB)

Day 07 – Serengeti National Park
Enjoy morning and afternoon game drives in the endless plains of the Serengeti for a chance to see the great herds of wildebeest, zebras and gazelles or a pride of lions lounging in the shade. All meals and overnight at the Serengeti Migration Camp (LDBB)

Day 08 – Serengeti National Park/Arusha/ Departure

Early morning game drive returning to the camp for breakfast. After breakfast transfer to Lobo Airstrip for your scheduled flight to Arusha. Met upon arrival at Arusha Airport and transfer to a restaurant for lunch. Optional day room. In the evening transfer to JRO for your outbound flight. A Africa Safari Discovery representative will re-confirm your onward flight, and assist you at check-in.

End of our services.

WINGS OVER KENYA & TANZANIA SAFARI (LUXURY)

Tour Code : ASD042

ITINERARY AT A GLANCE

Day	Location	Accommodation	Board	Activity
01	Nairobi	Nairobi Serena Hotel	BB	TRSF
02	Samburu	Larsens Luxury Camp	LDBB	FLT, P
03	Samburu	Larsens Luxury Camp	LDBB	A, P
04	Maasai Mara	Olonana Luxury Camp	LDBB	FLT, P
05	Maasai Mara	Olonana Luxury Camp	LDBB	A, P
06	Maasai Mara	Olonana Luxury Camp	LDBB	A, P
07	Serengeti N, P	Kusini Luxury Camp	LDBB	FLT, P
08	Serengeti N, P	Kusini Luxury Camp	LDBB	A, P
09	Serengeti N, P	Kusini Luxury Camp	LDBB	A, P
10	Ngorongoro Crater	Ngorongoro Serena Lodge	LDBB	A, LE
11	Ngorongoro Crater	Ngorongoro Serena Lodge	LDBB	CT, LE
12	Departure	Day room Nairobi Serena Hotel	L	FLT, TRSF

L-Lunch, **D**-Dinner, **BB**-Bed and breakfast, **LDBB**-Lunch, dinner, bed and breakfast, **TRSF**-Transfer, **E**-Early morning game drive, **A**-Morning game drive, **P**-Afternoon game drive, **GT**-Crater Tour, **LE**-Leisure



Luxury Safaris

FULL ITINERARY

Day 01 – Arrival Nairobi

Arrive at Jomo Kenyatta Int'l Airport, met by our representative and transferred to your hotel. Overnight Nairobi Serena Hotel (Bb).

Day 02 – Nairobi/Samburu National Reserve

Breakfast at the hotel. Transfer to Wilson Airport for your flight to Samburu G. Reserve. Met at the airstrip and transferred to Larsens Camp. Check in and be shown to your rooms. Lunch at the camp. Enjoy an afternoon game drive returning to the camp for dinner. Dinner and overnight Larsens Luxury Camp (LDBB)

Day 03 – Samburu National Reserve

Ewaso Nyiro river, the only water source in the region, bisects the three reserves of Shaba, Buffalo Springs and Samburu. The river's permanent waters abound with crocodile, hippo and plenty of wildlife including the peculiar Grevy zebra, Gerenuk, Beisa Oryx and the comical Somali Ostrich, unique to these northern parts. Morning and afternoon game drives in the Samburu and Buffalo Springs National Reserves. All meals and overnight at Larsens Luxury Camp (LDBB)

Day 04 – Samburu National Reserve/Masai Mara National Reserve

Breakfast at the camp. Check out and be transferred to the airstrip for your flight to the Masai Mara, A wonderful wildlife haven renowned for high predator population and the incredible wildebeest migration. Met on arrival by the camps driver guides and with an en route game drive transferred to the camp. Lunch at the camp. Afternoon game drive in the reserve where there's plenty to see including the plain's wide variety of wild game. Dinner and overnight at Olonana Luxury Camp (LDBB)

Day 05 & 06 – Masai Mara National Reserve

Two (2) full days in the Mara with morning and afternoon game drive. Breakfast, lunch and dinner. Enjoy the facilities and activities at the Camp. All meals and overnight at Olonana Luxury Camp (L,D,B).

Optional

0600 hrs Optional balloon ride across the Masai Mara Reserve. The BALLOON SAFARI adventure begins in the pre-dawn hours. The magnificent view of the park is thrilling. Towards the end of the safari, you rise to a height of 1500 feet for a panoramic view of the twisting Mara River and the savanna below. After an hour or so in the air, your safari finishes with a flourish: a champagne breakfast in the

bush, cooked on the balloon's burners.

Day 07 – Masai Mara National Reserve/Serengeti National Park

Breakfast at the camp. Check out and be transferred to the airstrip for your flight back to Nairobi. On arrival connect to your flight to JRO. Picnic lunches and connect to a flight to Serengeti National Park. Met on arrival and with an enroute game drive you will be transferred to Kusini Tented Camp. Check in and freshen up. Dinner and overnight Kusini Luxury Permanent Camp (LDBB)

Day 08 & 09 – Serengeti National Park

Enjoy morning and afternoon game drives in the endless plains of the Serengeti for a chance to see the great herds of wildebeest, zebras and gazelles or a pride of lions lounging in the shade. All meals and overnight at the Kusini Luxury Permanent Camp (LDBB)

Day 10 – Serengeti National Park/Ngorongoro Conservation Area

Depart for a morning game drive in the Serengeti National Park. Lunch at the camp. After lunch drive to Olduvai Gorge, site of Louis and Mary Leakey's renowned archaeological discoveries. Their findings include some of the man's earliest known ancestral remains. Continue driving to Ngorongoro Conservation Area for dinner and overnight Ngorongoro Serena Lodge (LDBB)

Day 11 – Ngorongoro Conservation Area

Today you will descend 2000 feet (Over 600 metres) to the floor of the crater for a day crater tour with picnic lunches. Explore the forest areas that are inhabited by monkeys and elephants, the lake area, where you may see the flamingos and the open savannah where the lions hunt for food. Dinner and overnight at Ngorongoro Serena Lodge (LDBB)

Day 12 –Ngorongoro Conservation Area/ Arusha/Nairobi/Departure

After breakfast, drive back to Arusha. Lunch in Arusha town. Transfer to JRO for your flight to Nairobi. Transfer to Nairobi Serena Hotel booked on a day room. Later evening transfer to JKIA for your outbound flight. A Africa Safari Discovery representative will re-confirm your onward flight, and assist you at check-in. End of our services.

NB: During the period 01.04.12 to 31.05.12 in Serengeti, clients will stay at The Kirawira Luxury Camp as Kusini Luxury Camp is closed over this period



KILIMANJARO CLIMB

“As wide as all the world, great, high and unbelievably white in the sun was the square top of Mount Kilimanjaro”, wrote Ernest Hemingway of this highest mountain in Africa rising to 5,895 metres above sea level. Situated near the town of Moshi in northern Tanzania, Mount Kilimanjaro rises from the dry plains, through a wide belt of forest and high alpine heath to an almost bare desert and finally the snow capped summit, Uhuru Peak, just 3 degrees south of the Equator. One of the world’s highest free standing mountains, Mt. Kilimanjaro is composed of three extinct volcanoes: Kibo 5895 m (19340 ft.), Mawenzi 5149 m (16896 ft.), and Shira 3962 m (13000 ft.). The ascent of Kilimanjaro can be done from six routes: Mweka, Umbwe, Shira, Rongai, Machame, and the Marangu Route which is the easier and the most popular. Depending on which route one wants to use, the climb of Kilimanjaro can take between four nights to six nights on the mountain. The two most popular routes are Marangu and Machame. On the Marangu Route, accommodation is in alpine huts while on Machame Route it is camping throughout. While expert guides and porters will accompany you on your climb, unlike Mount Everest, no technical equipment is required.



MARANGU ROUTE

Tour Code : ASD043

(Equipment and attire not included)

ITINERARY AT A GLANCE

Day	Location	Accommodation	Board	Activity
01	Moshi	Springland Hotel/Similar	DBB	TRSF, LE
02	Mandara	Mandara Hut	LDBB	TRSF, CL
03	Horombo	Horombo Hut	LDBB	CL
04	Kibo	Kibo Hut	LDBB	CL
05	Horombo	Horombo Hut LDBB	CL	
06	Moshi	Springland Hotel/Similar	DBB	CL, TRSF, LE
07	Departure		TRSF	

L-Lunch, **D**-Dinner, **BB**-Bed and breakfast, **LDBB**-Lunch, dinner, bed and breakfast, **TRSF**-Transfer, **LE**-Leisure, **CL**-Climb (ascent/descent)

FULL ITINERARY

Day 01 – Nairobi/Arusha/Moshi

Pick up from your hotel in Nairobi or from Jomo Kenyatta International Airport and depart on the shuttle bus to Moshi. On arrival at the hotel in Moshi you will be met by a Kilimanjaro Climb representative who will run through all pre-climb details. Dinner and overnight at The Springland Hotel (DBB)

Day 02 – Moshi/Marangu/Mandara

Drive to Marangu Gate (6,500 feet) and then start the five hour walk to Mandara Hut at 8,800 feet. Most of the walk is through forest on a good path. A small path branches off left after a short way. This is a longer, more scenic and muddier way which your guide will probably not want to take. Mandara Hut is a small number of new huts in a forest clearing. If you have the time and energy a short walk to Maundi Crater is worthwhile. From its low rim you can see above the trees and should be able to see the main summit, although in the afternoon it will almost certainly be cloud-capped.

Day 03 – Mandara/Horombo

From Mandara the path continues through the forest. After a couple of hours you will suddenly emerge from the forest to hopefully amazing views of the summit, suddenly much nearer. The path follows the rolling moorland to reach Horombo Hut at 12,000 feet after a total of about six hours. Horombo is really a small village and is usually busy. Many people spend two nights here and you will stay again on the way down. Once you reach Horombo it is noticeably colder and you will need to have a fleece jacket or sweater with you. About now you will also start to feel the effects of

altitude, so drink and walk slowly.

Extra Day (This may not be in your itinerary). A leisurely walk to The Saddle by the right hand path takes you close to Mawenzi. This is an extra day of acclimatization and it's an ideal day to rest as well as walk high and sleep low. You then return to Horombo for the night.

Day 04 – Horombo/Kibo

Continue on the moorland path, past the 'Last Water Point' where you should fill your bottles. The slope eases as you reach the desert like expanse of The Saddle and the group of huge rocks. It's an easy couple of hours to Kibo Hut, but you'll be troubled by the view of the path you'll take tomorrow. Kibo Hut is at 15,300 feet and so it will be very cold at night. You'll probably have a head-ache and not eat much. You must drink water as much as possible. If you have had an extra night at Horombo you'll be feeling much better and smugger than the others. The good news is that you'll be leaving soon after midnight

Day 05 – Kibo/Uhuru Peak/Horombo

The path soon steepens as you start up the huge scree slope of the actual rim. The main difficulties are psychological as you walk slowly and rhythmically uphill for about five hours, possibly the longest five hours of your life. Two good things happen - the sky lightening tells you that you are getting nearer, and rocks appear around you. You are now very near Gillman's Point, 18,500 feet, the lowest point on the rim. Most people stop here, and you should only continue if you are feeling well and the weather is settled. The highest point, Uhuru Peak, 19,340 feet, is much further than it looks. If you have timed the climb well, Mawenzi, behind you, will be glowing red in the dawn

Rwanda Safaris

sun. The walk round the rim to Uhuru is fairly level but takes about two hours there and two back, so only continue if you are feeling strong. Take the advice of your guide at this point. The walk is well worth it, not just because of the sense of achievement, but for the amazing ice scenery you'll pass on the way. Do not linger too long at the summit as you have a long way to go. The descent commences with the walk around the crater rim to Gillman's Point. From Gillman's, if you are brave and have good knees, you can scree-run down the scree slopes almost all the way to Kibo Hut. This can take less than an hour but more likely two. Here you will get tea and biscuits and a chance to take a short rest. Then you walk back across The Saddle towards Mawenzi, the third of Kilimanjaro's peaks. The views are great and you reach Horombo in about two hours. This means that this day you will be on the move for more than fourteen hours with one hour's rest at Kibo. It's a tough day, but from Uhuru Point it is all downhill, and at Horombo you will get the chance to wash, eat well, and buy a drink or three.

Day 06 – Horombo/Marangu/Moshi

The home run! It's about 7 hours walk from Horombo Hut to the Marangu Gate, passing Mandara Hut en route. At the hut there will be a chance to buy drinks. The final stage is through the rain forest and it is worth asking your guide to take the less crowded route via the waterfalls. At Marangu Gate you can collect your certificates as you sign out and meet your vehicle for the drive to back to the hotel for dinner and a good sleep. Dinner and overnight at The Springland Hotel (DBB)

Day 07 – Moshi/Arusha/Nairobi

After breakfast depart on the shuttle bus back to Nairobi. Drop off at your hotel or Jomo Kenyatta Airport for your departure flight back home. A Africa Safari Discovery representative will re-confirm your onward flight, and assist you at check-in.

End of our services.



Rwanda Safaris

MACHAME ROUTE

Tour Code : ASD044

(Equipment and attire not included)

ITINERARY AT A GLANCE

Day	Location	Accommodation	Board	Activity
01	Moshi	Springland Hotel/Similar	DBB	TRSF, LE
02	Machame	Machame Camp	LOBB	TRSF, CL
03	Shira	Shira Camp	LOBB	CL
04	Barranco	Barranco Camp	LOBB	CL
05	Barafu	Barafu Camp	LOBB	CL
06	Mweka	Mweka Camp	LOBB	CL
07	Moshi	Springland Hotel/Similar	DBB	CL, TRSF, LE
08	Departure		TRSF	

L-Lunch, **D**-Dinner, **BB**-Bed and breakfast, **LOBB**-Lunch, dinner, bed and breakfast, **TRSF**-Transfer, **LE**-Leisure, **CL**-Climb (ascent/descent)



DETAILED ITINERARY

Day 01 – Nairobi/Arusha/Moshi

Pick up from your hotel in Nairobi or from Jomo Kenyatta International Airport and depart on the shuttle bus to Moshi. On arrival at the hotel in Moshi you will be met by a Kilimanjaro Climb representative who will run through all pre-climb details. Dinner and overnight at The Springland Hotel (DBB)

Day 02 – Moshi/Machame

After breakfast, you are collected from your hotel and transferred to the Kilimanjaro National Park. Your climb will begin through the lower tropical rainforest, up to Machame Camp at 3000m, where you stay overnight in a tented camp. Today's trek generally takes 5-6 hours, and it is possible to spot Colobus monkeys and

beautiful bird life on the lower slopes.

Day 03 – Machame/Shira

A 6 hour walking day which starts with a steep ascent in direct line with the mountain's peak. After around 4 hours the Shira ridge is summited and the trail flattens out. Overnight at Shira Camp (3800m).

Day 04 – Shira/Barranco

After breakfast the climb continues upwards and on a clear day Kibo's peak offers a perfect view. This part of the climb tends to be slow and steady as the temperature drops and the altitude increases. The afternoon sees the trail descend into the more sheltered Barranco Valley. Total walking time is around 6 hours. Overnight at Barranco Camp (3950m).

Day 05 – Barranco/Barafu

Today the trail leads out of the Barranco Valley, over the Barranco Wall and along the southern circuit of Kibo. If the weather is fine, the views of glaciers and downward to the East Africa plains are exceptional. Total walking time today is 6-7 hours. Evening rest at Barafu Camp (4600m) before midnight departure for the summit.

Day 06 – Barafu/Uhuru Peak/Mweka

Very early midnight breakfast. The trail this morning is rough and rocky, cutting through the Rebmann and Ratzel Glaciers. After around 7 hours Stella Point comes into view and it is a further hour to Uhuru Peak (5895m), the highest point in the whole of Africa!

The descent is via Stella Point and Barafu

Camp to Mweka Camp, around 6 hours. A truly exhausting but exhilarating day! Overnight at Mweka Camp.

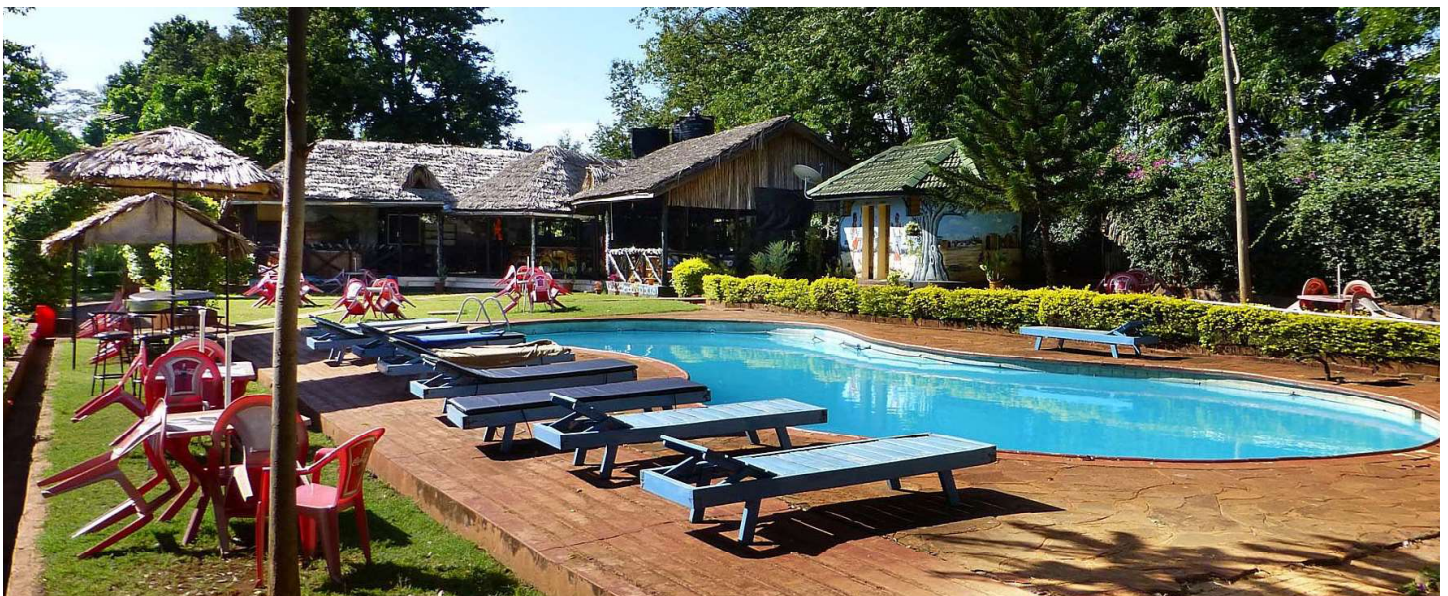
Day 07 – Mweka/Moshi

A short descent to Mweka Gate, where you will collect your certificates as you sign out and meet your vehicle for the drive to back to the hotel for dinner and a good sleep. Dinner and overnight at The Springland Hotel (DBB)

Day 08 – Moshi/Arusha/Nairobi

After breakfast depart on the shuttle bus back to Nairobi. Drop off at your hotel or Jomo Kenyatta Airport for your departure flight back home. A Africa Safari Discovery representative will re-confirm your onward flight, and assist you at check-in.

End of our services.



Rwanda Safaris

Rwanda Gorilla Trekking

Welcome to Rwanda

Rwanda situated at the heart of Africa the bridge between the eco-system of the Cong basin and the Great Rift Valley of Eastern Africa and thus shares the natural riches of both worlds resulting in a country of exquisite beauty and unsurpassed biodiversity. Among its many and enduring attractions are the primates, in particular the mountain Gorillas. One of the most awesome wildlife interactions in the world. We invite you to meet these gentle giants, our ancestors sharing some 97% of our DNA, in their natural habitat, the verdant jungle and misty mountains of Rwanda. Our specialist eco-friendly trekking safaris, led by professional guides and with no detail overlooked, provide the ultimate once-in-a-lifetime experience.

This is definitely a country one has to tour at least once in their lifetime. Tracking the magnificent mountain gorillas through the lush slopes of the Virungas remains without a question the most thrilling and moving wildlife experience to be had on the world's wildest continent. After decades of careless human activities on this planet including wars and destruction of the environment, many creatures have succumbed and become extinct. Some, like the dinosaurs are today popular stars in horror films and children's stories although they are known to us only by the fossils they left on earth – only their fossils.

The damage today is so extensive that even with the efforts conservationists are putting in to protect the ecosystems and the creatures of this world, some species are still faced with the dreadful reality of being near extinct. One such species is man's own very close relatives – the mountain Gorillas.

One of the last remaining populations of mountain Gorillas inhabit the mountainous region around lake Kivu in Rwanda. Here, it is possible to observe these remarkable creatures in their natural habitat.

The tracking may take up to 2 to 4 hours in the rain forest area however, a close-up view of these gentle giants feeding and grooming each other, is a just reward for the effort.

We would be doing a great injustice to Rwanda if we don't highlight the beauty of its landscape and people. Rwanda is a green country and within its borders sit 1000 hills, thick rain forests, beautiful lakes and volcanoes. All these combined with the main attraction of Gorilla tracking make Rwanda the number one destination for the informed tourist of today.



Rwanda Safaris



GORILLA TRACKING ARRANGEMENTS

We organize thrilling treks to visit these gentle giants in their misty mountain home, also known as the Virunga Mountains (a chain of volcanoes with altitudinal ranges of 3500 m - 4507 m). Gorillas are found in the forests surrounding the volcanoes.

There are currently four habituated gorilla families that can be visited. In order to minimize the behavioral disturbances to the gorillas, only 8 people are allowed to visit each of the four families. This means that only 32 people are allowed in the park daily. The limits serve to protect the gorillas from the risk of exposure to human-borne diseases.

In order to execute your bookings effectively, the following information is required.

- *Intended period of stay in Rwanda.*
- *Number of participants in your group*
- *How many gorillas' visits you intend to make.*
- *Please note that children under 15 years are not allowed in the park.*

Flight information

- *Daily connections are possible from Nairobi, JKLA. A flight from Nairobi to Kigali takes only one hour and half.*

Park National Des Volcans (Volcanoes National Park)

Situated 91 kms NW of the capital Kigali, it's a 2 hours drive to the

town of Ruhengeri. You are then driven on to the starting point in Kinigi where the hike begins to the edge of the forest. Here, you will get a brief break for instructions on how to behave in the presence of gorillas. The tracking then begins. Once inside the forest, the following must be observed.

- *No spitting in the park.*
- *No littering.*
- *No coughing in the direction of the gorillas.*
- *Only speak in whispers.*
- *Do not point at the gorillas.*
- *Movement around the gorillas must be unthreatening.*
- *No venturing behind thick shrubs. You may surprise a gorilla.*
- *If you get stung by a nettle, do not cry out, scream and shout-out loud or make any sudden moves.*
- *If a gorilla charges or vocalizes, do not look directly at it. Stand perfectly still unless the guide asks you to crouch or move back.*

Essentials for the hike

- *Long pants (jeans/ khakis) and long sleeve shirt.*
- *Good hiking boots.*
- *Light weight rain coat.*
- *Cap/ hat.*
- *Camera (no flash)/ personal camcorder.*
- *Drinking water.*

CLASSIC RWANDA SAFARI

Tour Code : ASD045

Rwanda Safaris

ITINERARY AT A GLANCE

Day	Location	Accommodation	Board	Activity
01	Nyungwe	Gisakura Guest House	LDBB	FLT, TRSF, VI
02	Nyungwe	Gisakura Guest House	LDBB	CT, VI, LE
03	Lake Kivu	Lake Kivu Serena	LDBB	CT, TRSF, LE
04	Ruhengeri/Kinigi	Gorilla Mountain View Lodge	LDBB	VI, LE
05	Kigali	Novotel Umubano/Kigali Serena	L- BB	GT, VI, TRSF, LE
06	Departure			TRSF, FLT

L-Lunch, **D**-Dinner, **BB**-Bed and breakfast, **LDBB**-Lunch, dinner, bed and breakfast, **TRSF**-Transfer, **VI**-Visit, **FLT**-Flight, **CT**-Chimp Trekking, **GT**-Gorilla Trekking, **LE**-Leisure



DETAILED ITINERARY

Day 01 – Nairobi/Kigali/Butare/Nyungwe

Morning flight Nairobi to Kigali. Met upon arrival at Kigali International Airport. Assistance and transfer to The Novotel Umubano Hotel for coffee and briefing on your trip. Then depart to Butare (about 2 hours from Kigali), the intellectual and cultural heart of Rwanda, set at a short distance from the traditional seat of the feudal monarch, and the site of numerous academic institutions including the country's largest university. Visit the King's Palace at Nyanza. This is an enormous traditionally constructed dome, no longer in active use, but painstakingly maintained as a museum. Later on visit the National Museum on the outskirts of Butare that houses the finest ethnographic collection in East Africa. Lunch at Ibis Hotel. Thereafter drive to Nyungwe Forest Reserve via Gikonoro with optional visit to a genocide memorial site. Dinner & Overnight: GISAKURA GUEST HOUSE (LDBB) (this is a simple and basic lodge in Nyungwe - only available one in the forest).

Day 02 – Nyungwe: Tracking Chimps And Other Primates/Lake Kivu

After an early breakfast enter the Nyungwe Forest Reserve for primates tracking. Nyungwe Forest Reserve extends for almost 1000Km2 across the majestic hills of southeast Rwanda. This forest reserve is the largest montane forest remaining in East Africa. It is rightly celebrated for the rich variety of its flora and fauna. At least 200 different types of trees are found here, along with hundreds of different flowering plants, including begonia, more than 100 species

of orchid, and sensational giant lobelias. Of the larger mammals, primates are the most visible, with 13 recorded species representing 25% of the African primate checklist (this includes about 500 chimpanzees, colobus monkeys which move in troops of several hundred's, grey-checked mangabey and red-tailed monkey). Home to more than 275 bird species, Nyungwe is the most birding site in Rwanda. The trekking will take you until around 1400h. After lunch visit the nearby lovely tea plantation and its factory (Gisakura Tea Plantation). Dinner & Overnight: GISAKURA GUEST HOUSE (LDBB)

Day 03 – Nyungwe Forest For Chimps And Other Primates/Lake Kivu

This morning, we re-enter the forest for a second search of chimps. (As the chimps are never guaranteed, we strongly recommend two tracking attempts). Lunch at the Guest House before driving west Cyangungu on the shores of lake Kivu. Lake Kivu is a beautiful vast inland sea enclosed by the steep, green terraced hills that are so characteristic of rural Rwanda. From here proceed by speed boat to the lake resort town of Kibuye. Lunch in Kibuye. Continue boat journey to Kivu Sun. Dinner & Overnight: LAKE KIVU SERENA HOTEL (LDBB)

Day 04 – Lake Kivu/Ruhengeri

This day after a leisurely lakeside breakfast, we drive to Ruhengeri, main base town for Gorilla trekking. The drive is approximately 1.5 hours on a good paved road offering beautiful scenic views.. Stops and picnic lunch en route. Then drive on to your lodge in Kinigi, at the base of the Volcanoes. Dinner & Overnight : GORILLA MOUNTAIN VIEW LODGE (LDBB)

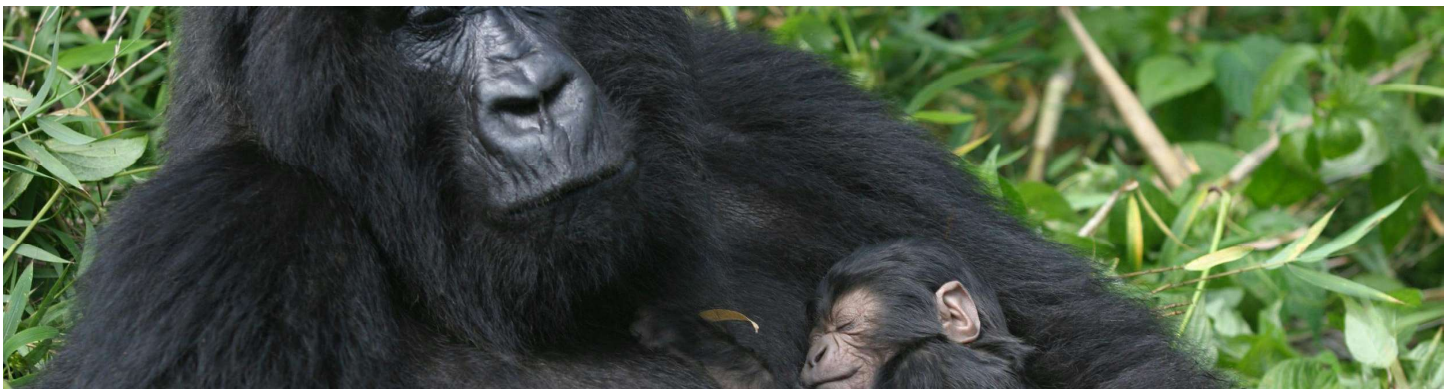
Day 05 – Parc National Des Volcanes - Mountain Gorillas/Kigali

As the famous Dian Fossey put it :“In the heart of Central Africa, so high up that you shiver more than you sweat, are great, old volcanoes towering almost 15,000 feet and nearly covered with rich, green rainforest- the Virungas(or Volcanoes). After breakfast at the lodge, report the Volcano Park office for gorilla formalities. Then drive to the edge of the Parc National des Volcans, briefing by the park's guides on how to behave in the forest and in the presence of gorillas. Located in the Virunga Mountains, magnificent chain of dormant volcanoes in the North of the country, the park forms part of the extension of the Congo-Nile divide, separating two of Africa's most important watersheds. They're also home to the world's last surviving mountain Gorilla populations, currently a mere 700 individuals. Thereafter, enter the park for the trip's highlight: MOUNTAIN GORILLAS TRACKING which will take you to midday depending on where you find them. Lunch at the lodge. In the afternoon, if time permits visit the little known but compellingly beautiful twin lakes Bulera & Ruhondo before proceeding back to Kigali. Overnight: NOVOTEL UMUBANO/KIGALI SERENA (L-BB)

Day 06 – Departure

After breakfast transfer to Kigali International Airport for your departure flight to Nairobi. A Africa Safari Discovery representative will re-confirm your onward flight, and assist you at check-in.

End of our services.



TWO NIGHTS/THREE DAYS GORILLAS IN THE MIDST

Tour Code : ASD046

Rwanda Safaris

ITINERARY AT A GLANCE

Day	Location	Accommodation	Board	Activity
01	Kigali	Novotel Umubano/Kigali Serena	BB	FLT, TRSF, LE
02	Ruhengeri/Kigali	Novotel Umubano/Kigali Serena	L-BB	GT, VI, LE
03	Departure			TRSF, FLT

L-Lunch, **D**-Dinner, **BB**-Bed and breakfast, **LDBB**-Lunch, dinner, bed and breakfast, **TRSF**-Transfer, **VI**-Visit, **FLT**-Flight, **GT**-Gorilla Trekking, **LE**-Leisure



DETAILED ITINERARY

Day 01 – Nairobi/Kigali

Morning flight Nairobi to Kigali. Met upon arrival at Kigali International Airport. Assistance and transfer to your hotel. Rest of the morning at leisure. In the afternoon city tour of Kigali including a visit to the Gisozi Genocide Memorial Museum. Overnight: NOVOTEL UMUBANO/KIGALI SERENA (BB)

Day 02 – Kigali/Parc National Des Volcans - Mountain Gorillas/Kigali

Very early wake up call and breakfast. At 05h00 pick up from your hotel and drive to Ruhengeri main base town for Gorilla trekking. The drive is approximately 1.5 hours on a good paved road offering beautiful scenic views. Report at the Volcano Park office for gorilla formalities. Then drive to the edge of the Parc National des Volcans, briefing by the park's guides on how to behave in the forest and in the presence of gorillas. Located in the Virunga Mountains, magnificent chain of dormant volcanoes

in the North of the country, the park forms part of the extension of the Congo-Nile divide, separating two of Africa's most important watersheds. They're also home to the world's last surviving mountain Gorilla populations, currently a mere 700 individuals. Thereafter, enter the park for the trip's highlight: MOUNTAIN GORILLAS TRACKING which will take you to midday depending on where you find them. Lunch at the lodge. In the afternoon, if time permits visit the little known but compellingly beautiful twin lakes Bulera & Ruhondo before proceeding back to Kigali. Overnight: NOVOTEL UMUBANO/KIGALI SERENA (L-BB)

Day 03 – Departure

After breakfast transfer to Kigali International Airport for your departure flight to Nairobi. A Africa Safari Discovery representative will re-confirm your onward flight, and assist you at check-in.

End of our services.



THREE NIGHTS/FOUR DAYS GORILLAS IN THE MIDST

Tour Code : ASD047

ITINERARY AT A GLANCE

Day	Location	Accommodation	Board	Activity
01	Kigali	Novotel Umubano/Kigali Serena	BB	FLT, TRSF, LE
02	Ruhengeri/Kinigi	Gorilla Mountain View Lodge	LDBB	CT, VI, LE
03	Ruhengeri/Kigali	Novotel Umubano/Kigali Serena	L-BB	CT, VI, LE
04	Departure			TRSF, FLT

L-Lunch, **D**-Dinner, **BB**-Bed and breakfast, **LDBB**-Lunch, dinner, bed and breakfast, **TRSF**-Transfer, **VI**-Visit, **FLT**-Flight, **GT**-Gorilla Trekking, **LE**-Leisure

DETAILED ITINERARY

Day 01 – Nairobi/Kigali

Morning flight Nairobi to Kigali. Met upon arrival at Kigali International Airport. Assistance and transfer to your hotel. Rest of the morning at leisure. In the afternoon city tour of Kigali including a visit to the Gisozi Genocide Memorial Museum. Overnight: NOVOTEL UMUBANO/KIGALI SERENA (BB)

Day 02 – Kigali/Parc National Des Volcans - Mountain Gorillas/Kigali

Very early wake up call and breakfast. At 05h00 pick up from your hotel and drive to Ruhengeri main base town for Gorilla trekking. The drive is approximately 1.5 hours on a good paved road offering beautiful scenic views. Report at the Volcano Park office for gorilla formalities. Then drive to the edge of the Parc National des Volcans, briefing by the park's guides on how to behave in the forest and in the presence of gorillas. Located in the Virunga Mountains, magnificent chain of dormant volcanoes in the North of the country, the park forms part of the extension of the Congo-Nile divide, separating two of Africa's most important watersheds. They're also home to the world's last surviving mountain Gorilla popula-

tions, currently a mere 700 individuals. Thereafter, enter the park for the trip's highlight: MOUNTAIN GORILLAS TRACKING which will take you to midday depending on where you find them. Lunch at the lodge. In the afternoon, if time permits visit the little known but compellingly beautiful twin lakes Bulera & Ruhondo before proceeding back to Kigali. Overnight: NOVOTEL UMUBANO/KIGALI SERENA (LDBB)

Day 03 – Parc National Des Volcans - Mountain Gorillas/Kigali

After breakfast at the lodge, report the Volcano Park office for gorilla formalities for your second Gorilla Trekking visiting a different Gorilla family. Lunch at the lodge. After lunch drive back to Kigali. Overnight: NOVOTEL UMUBANO/KIGALI SERENA (L-BB)

Day 04 – Departure

After breakfast transfer to Kigali International Airport for your departure flight to Nairobi. An Africa Safari Discovery representative will re-confirm your onward flight, and assist you at check-in.

End of our services.

Gorilla Guidelines

To minimize possible transmission of human diseases, visitors are asked to maintain a distance of 7m (about 22 feet) from the gorillas. If you are sick with a cold, flu or other contagious illness, please do not visit the gorillas. The Viewing time is limited to one hour, and only 8 visitors maximum are allowed per group. Spitting in the park is strictly prohibited and should you need to cough, cover your mouth and turn away from the gorillas. Keep your voice low, try not to make rapid movements, because that may frighten the gorillas. If a gorilla should charge or vocalize at you, do not be alarmed, stand still, look away from the gorilla and follow your guide's directions.

Rwanda Safaris





Africa

Safari Discovery

Tours & Travel

For Safaris in Kenya, Tanzania & Rwanda

Our Location & Contact Details:

Africa Safari Discovery
Vision Plaza, 5th Floor, Suite 6
Mombasa Road
Nairobi, Kenya

Tel: +254 20 4440666
Office Mobile: +254 706 287 600

Canada Contact:

SERAH NJOROGE
+1 647 219 4898, Canada

E-mail: info@africasafaridiscovery.com
Website: www.africasafaridiscovery.com